



LEARN & CREATE

with Baby Lock



Holiday Wool Felt Poster



Celebrate the holidays by creating your own felt poster. The project features the Solaris 2's large hoop size, camera placement and large built-in fonts. IQ Designer allows you to create fun decorative fill stitched applique numbers to highlight a favorite time of year!

Skill Level: Intermediate

Created by: Patty Marty, Baby Lock Training, Education and Events Manager

Supplies:

- Baby Lock® Solaris 2 sewing and embroidery machine. This project could be modified for any of the Baby Lock machines with IQ Designer.
- Embroidery Foot
- 10 5/8" X 16" Hoop
- Scan Frame for IQ Designer
- Printed Number PDF (included) or create your own using Microsoft Word
- ½ yard of white wool felt
- 1 yard of red wool felt
- Baby Lock® Tear Away Firm Stabilizer (BLT103)
- Purchased wool felt garland
- 18" magnetic poster hanger frame set
- Madeira® Rayon or Polyneon thread for embroidery



LEARN & CREATE

with Baby Lock



- Rotary cutter, mat and ruler
- Hot Glue Gun
- Temporary Adhesive Spray



Instructions:

The supply list will make an 18" X 24" poster size which includes a felt backing. Print or create your own PDF number artwork to create the applique numbers. Adjust the letter sizing as needed if using a different machine with IQ Designer.

Creating the Artwork:

1. To create the artwork for this project, we will be utilizing a computer program like Microsoft Word.
2. Using Microsoft Word open a Blank Document.
3. Scroll the font list to find the font of choice.
4. Type out numbers 2 5 for your poster.
5. On the Tool Bar, adjust the font size of your lettering to fill the page. Your font size may be over 400pts and that is OK.
6. Since most lettering has a solid fill, we want to adjust that so that we only have an outline.
7. On the Tool Bar, expand your Font options by clicking the arrow in the bottom right corner of the Font section of the Tool Bar/Menu. On the pop-up window, select "Text Effects" at the bottom of the page. Select "Text Outline" and select "Solid Outline". On the options for line, select the Color to be **BLACK** and Width to be **3.0 pt**. Touch OK to close that box and OK again to close the Font window.
8. The font you selected should be changed to an outline.
9. If desired, save the document so you have it for future projects and print a copy for scanning with IQ Designer.
10. JPEG Option: If your PC has a program installed where you can use a snipping tool or snag software, you have the option to snag around the lettering and save it



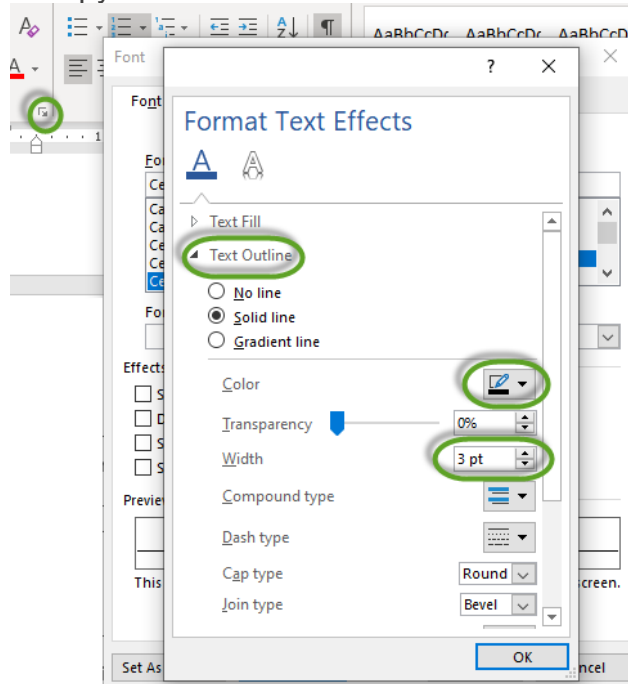
LEARN & CREATE

with Baby Lock



as a .JPEG file. If possible, resize and rotate the design to be orientated for the design page or an 8.5" x 11" sheet of paper. This file can be placed on a USB stick and imported into IQ Designer. Artwork imported as a .JPEG can often yield cleaner results in the IQ Designer program and require less clean-up. (PRO-TIP)

11. Bring your printed copy or USB with the .JPEG to the machine.



At the Hooping Station-

1. Hoop the ½ yard of white felt in the 10 5/8" X 16" hoop with Baby Lock Tear Away Stabilizer.
2. Place the number "2" printed artwork onto the Scan Frame using the green magnets.

At the Embroidery Machine -

1. Set up the machine for embroidery
 - Thread the machine.
 - Attach the embroidery unit and the W foot to the machine.
 - Place an embroidery thread bobbin in the machine.
2. If you are using a printed document for artwork scanning, place the artwork onto



LEARN & CREATE

with Baby Lock



- the Scan Hoop using the included green magnets. Ensure the magnets are not covering over the artwork.
- Place the scan hoop onto the machine.

Scanning the Artwork to Create Applique -

Scanning Artwork in IQ Designer:

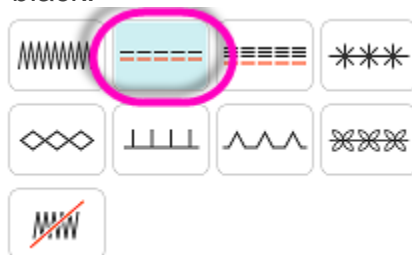
- Touch the **Home** key  at the top of the LCD screen.

- Touch **IQ Designer**  on the Home page.

- Prior to scanning, you can select the type of line you want to use for your Line Image. This can also be adjusted later, but since this artwork contains several line segments, it might be easier to assign this before the scan.



- Touch the **Line Properties**.
- Select the run stitch** for this design. You may also select a color chip if desired or leave at the default of black.

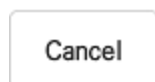
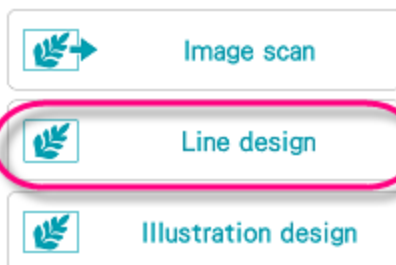


- Touch the **Scan Icon** at the top of the page.
- Then select **Line Design** from the options.

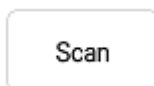


LEARN & CREATE

with Baby Lock



- The scanning page of the IQ Designer opens.



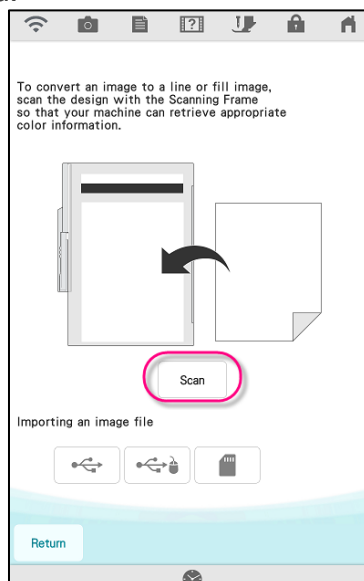
8. Touch **Scan**.

- A box opens that says, “The frame will move to be scanned with the built-in camera”.



9. Touch **OK**.

10. The image will be scanned.



11. When the scan is complete, the Framing the Image page opens.

12. **Touch and drag** the double headed red arrows to crop the image.



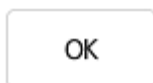


LEARN & CREATE

with Baby Lock



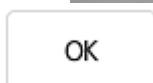
13. Touch **OK**.



14. If needed **adjust the gray-scale detection level** to clean up the artwork in the Result View.



15. Touch **OK**.



16. Touch **Set**. And your scanned image is placed on the IQ Design Page.



17. *An alternative to scanning artwork with the Scan hoop is to follow the steps above but at step 8, select the option to **Import a.JPEG image**.*

Importing an image file



18. *You can retrieve jpeg files from a USB or SD card. This is a great way to get a clean scan if you have your artwork in that format.*

19. Continue with step 9 after selecting the .JPEG file.

Adding and layering decorative fills:

1. Before we create the applique design, we first want to add decorative fill and stitch these out on the white wool felt fabric. This will become our applique fabric for the large number. There are a few ways you could approach this, but since we are working with felt, we are going to stitch out the layered decorative fills first, cut the felt and apply that later to be appliqued down.

2. For these numbers to be large, you will want to **Resize** the artwork to be 12" tall (12.06" X 7"). Since each number is scanned in separately, pick a consistent measurement for your number.



3. Once your artwork is resized, touch **Memory** to save the artwork.





LEARN & CREATE

with Baby Lock

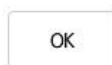


4. Select the **Region Fill Properties**.
5. Select the **Decorative Fills** option and **Select**.



6. **Select a fill** of choice for the background of your numbers. Touch **OK**.

7. **Select a color chip** and Touch **OK**.



8. Select the **Fill cup** for the Region Fill.



9. Touch inside the number to apply the fill.

10. Touch Next.



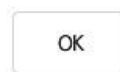
11. For the Fill Settings-

- a. Leave the fill at **100%**.
- b. **Turn OFF the Fill Outline**.
- c. If you have the option, can also **select the lighter Fill Options**.
 - i. Available on Solaris with Upgrade 1 or Solaris 2.

12. Touch **Set**.



13. Touch **OK** to transfer the design over to Embroidery.



14. The design will be placed on the Embroidery Editing Page.

15. Touch **Add**.

16. From the Main Embroidery Page, select **IQ Designer**.



17. **Retrieve** the saved number artwork. The artwork design will be stored in a "B Pocket" folder.



18. Select the number artwork from the B pocket folder.



LEARN & CREATE

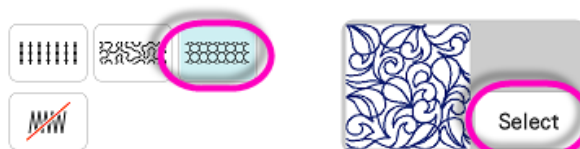
with Baby Lock



19. Select the **Region Fill Properties**.

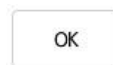


20. Select the **Decorative Fills** option and **Select**.



21. **Select a fill** of choice for the background of your numbers. Touch **OK**.

22. **Select a different color chip** and Touch **OK**.



23. Select the **Fill cup** for the Region Fill.



24. Touch inside the number to apply the fill.

25. Touch **Next**.



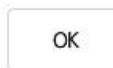
26. For the Fill Settings-

- Adjust the fill **size to 50%**. Touch **OK**.
- Turn OFF the Fill Outline**.
- If you have the option, can also **select the lighter Fill Options**.
 - Available on Solaris with Upgrade 1 or Solaris 2.

27. Touch **Set**.



28. Touch **OK** to transfer the design over to Embroidery.



29. The design will be placed on the Embroidery Editing Page.

30. Layer the designs on top of each other.

31. Touch **Memory** to save the design.



32. Touch **Embroidery**.



33. Place the hooped white wool felt fabric onto the machine.

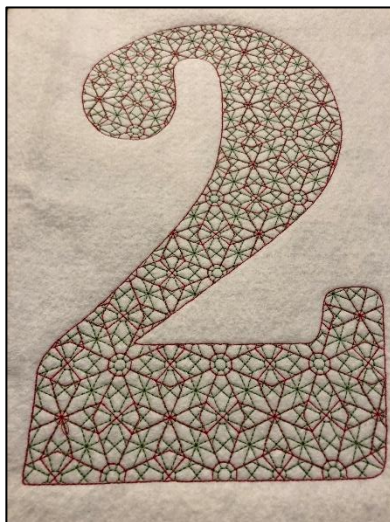
34. Lower the foot and press the **Start/Stop** button to begin embroidery.

35. Allow the background fill to stitch for both colors.



LEARN & CREATE

with Baby Lock



36. Repeat the process of scanning the artwork, sizing and adding decorative fill for the number "5" artwork.
37. Make sure to save the design along the way where indicated.
38. Rehoop the fabric to accommodate the new letter and embroider as well.



39. When embroidery is complete, remove any excess stabilizer from the back and trim around the letters using the stitch outline as your guide.



LEARN & CREATE

with Baby Lock

Creating an Applique Design:

1. Touch the **Home** key  at the top of the LCD screen.

2. Touch **IQ Designer**  on the Home page.

3. **Retrieve** the saved number artwork. The artwork design will be stored in a “B Pocket” folder.



4. Choose the outline artwork for the number from the pocket. Since we scanned this with a run stitch, we should not need to make any adjustments. ***Ensure you have the sized design as well!!*

5. Touch **Next**. 

6. There will be no adjustments to the line properties. Touch **Set**. 

7. A box opens to say “Converted to the embroidery pattern, and IQ Designer will be exited. OK to continue to embroidery edit screen?”

8. Touch **OK**. 

9. Your design will be placed on the center of the **Embroidery Editing** page.

10. When creating an Applique there are typically three different design layers:

i. placement stitch

ii. tack down stitch

iii. satin or decorative stitch

(Note the color chips in the **Color Palette** can be changed for the IQ applique to indicate the layers of an applique.)

11. The first **run stitch** layer is our placement stitch.



12. On the Embroidery Editing page, select the **Duplicate** key. 

13. Layer the second design on top of the original design. This second layer has created our **tack down** stitch.

14. Touch **Add**.

15. Go back to **IQ Designer**.





LEARN & CREATE

with Baby Lock

16. **Retrieve** the saved number artwork. The artwork design will be stored in a “B Pocket” folder.



17. Select the **Line Properties** and select a **Satin stitch** and color.



18. Using the **Line Fill Cup**, apply the properties to all the sections of the artwork outline.



19. If desired, save the design again to **Memory**.

20. Touch **Next**.

Next

21. For the Satin stitch select **6.0 mm or .0.240”**. Touch **OK**

22. Adjust the **Density to 110%**. Touch **OK**.

Set

23. Touch **Set**.

24. A box opens to say “Converted to the embroidery pattern, and IQ Designer will be exited. OK to continue to embroidery edit screen?”

OK

25. Touch **OK**.

26. Layer the satin stitch layer to the other two designs. This adds the final **decorative layer** to the applique design.

Memory

27. Touch **Memory** to save the design.

Embroidery

28. Touch **Embroidery**.

At the Hooping Station-

1. Cut an 18” X 24” piece of red felt.
2. Mark the center of the felt fabric to assist with aligning the two letters. Each letter will be stitched separately and lined up with the aid of the built-in camera on the Solaris 2.



LEARN & CREATE

with Baby Lock



3. Hoop with Baby Lock Tear Away Stabilizer and float the red wool felt in the 10 5/8" X 16" hoop. Use the temporary adhesive spray and/or pins to help assist in holding the fabric in place.



4. Gather the pre-cut letters with the Decorative Fill.

Back at the Embroidery Machine:

29. Place the hooped red wool felt fabric onto the machine.
30. Using the Camera, scan in the fabric and align the design based upon the center markings.
31. Add a basting stitch to the design to assist with securing the floated fabric.
32. Once placed, lower the foot and press the **Start/Stop** button to begin embroidery.
33. Re-thread the machine with coordinating thread for the Applique steps.
34. When stitching the Applique, follow the three steps of the Applique:
 - Placement stitch.
 - Place the pre-cut white wool felt applique fabric over the placement stitches.
 - Use pins or temporarily adhesive spray to ensure they stay in place.
 - Tack down stitch.
 - Since pre-cut, there should be no need to trim away the excess fabric. You can clean up if needed.
 - Satin or decorative stitch.





LEARN & CREATE

with Baby Lock



35. Once the design is finished sewing, re-hoop the fabric for the number "5".
36. Scan the hooped fabric using the built-in camera and place the design.
37. Repeat the steps above for stitching out the second applique number.
38. Once completed stitching both applique letters, re-hoop the fabric for the "December".

Using Large Built-in fonts

1. Touch the **Home** key  at the top of the LCD screen.
2. Touch **Embroidery**  on the Home page.
3. Select **Category 4 – Large Fonts**.
4. Choose **Tab 07** for the Large Calligraphy font.
5. Select the letter "D".



6. Touch **Set**.



LEARN & CREATE

with Baby Lock



7. Touch **Edit**.

Edit

8. Select **Rotate**.

Rotate

9. Rotate the design 90° to the left.

10. Move the design to the bottom center of the design page.

11. Touch **Add**.

Add

12. Continue the process above bringing in the individual letters to complete "December".

13. For the letter "e" touch **Edit**, select the existing letter and duplicate as needed. This will save you time in the Embroidery Editing process.

14. As you bring in the letters, you will discover they will not fit across the design page with their original size.



15. Touch **Size** and resize each letter down 10% using the regular resizing option.

16. Place all the letter across the design page in sequence.





LEARN & CREATE

with Baby Lock



17. Using the **Multiple Selection Tool**, select all the letters.



Touch **OK**.



18. Select **Edit** and choose the **Alignment Key**.



Align all the letters to the right. Touch **OK**.



19. While still all selected, **Group** the letters.



Embroidery

20. Touch **Embroidery**.

21. Save the design to **Memory** if desired.

22. Attach the hooped fabric back onto the machine.

23. Place the design as needed.

24. Touch **Layout** and activate **Monochromatic Sewing**.





LEARN & CREATE

with Baby Lock



25. Embroider the design.



26. When completed, remove from the hoop and remove excess stabilizer and basting stitches.
27. Place another 18" x 24" cut piece of felt on the back. Trim if needed to ensure front and back are same size. Pin in place.
28. Switch the machine over for sewing. Attach the standard "J" foot.
29. Stitch down the sides with thread color of choice.

Getting Crafty -

1. Now that we have the poster all sewn together, we can get a little crafty.
2. Gather the magnetic poster holder pieces and fire up the hot glue gun.
3. Since the felt is too heavy for the poster holder, we will be securing them together using hot glue.
4. Find a surface that you can safely hot glue the felt to the poster holder.
5. Place hot glue on the inside of each of the top section pieces and sandwich the red felt poster in-between.
6. Repeat the process for the bottom of the felt poster
7. Add the garland around the hanger or decorate as you so desire!!
8. Hang for all to hear as you spread Holiday CHEER!

For other exciting projects like this one, visit our website at www.babylock.com.

©2020 Baby Lock USA. This project may be freely used by individuals for non-commercial purposes. Project instructions may not be sold or distributed without approval from Baby Lock. Baby Lock must be acknowledged as the source of the project instructions through copyright or online.