



# LEARN & CREATE

with Baby Lock



## Merry, Merry Pillow



Designer's Gallery Creator Software makes it simple to digitize fun large letter embroidery designs. Use True Type fonts as artwork and layer standard and decorative fills to turn your favorite sayings into a unique embroidery design. Stitch all at one time using the multi-needle jumbo hoop or combine and align individual letters to make a larger design on whichever Baby Lock embroidery machine you own.\*\* These large embroidery stitch-outs that are perfect for making pillows and stretch canvas home décor!

**Skill Level: Intermediate**

Created by: Patty Marty, Baby Lock National Training Manager

### Supplies:

Baby Lock Enterprise or Valiant Embroidery Machine  
Jumbo Hoop 14" X 14" (ENJF)  
Positioning Stickers





# LEARN & CREATE

with Baby Lock



Designer's Gallery Creator Software

5 (or more) Spools embroidery thread to coordinate with design

2/3 yard of fabric of choice for front

2/3 yard of fabric for the back

Baby Lock Tear-Away stabilizer or Baby Lock Ultra Soft Fusible Stabilizer

Temporary spray adhesive for embroidery

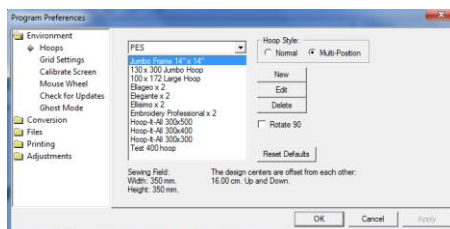
Sewing thread for pillow construction

Pillow form

## Instructions:

### Create Embroidery Design in Creator:

1. Using Designer's Gallery Creator, Select Edit and Preference.
2. Select Multi-Position hoop style and choose the 14X14 Jumbo Hoop. Touch OK.



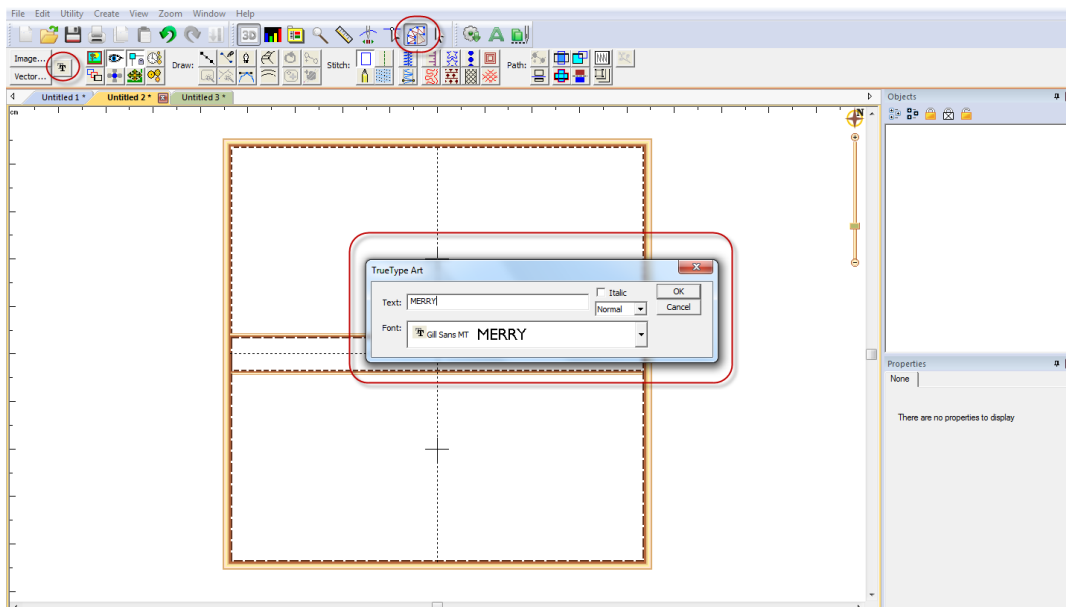
3. Click on the Creator Icon
4. Select the True Type option to use a font for your artwork
5. Type in MERRY and select the font of your choice. For this pillow the font Gills Sans MT was used. Touch OK.





# LEARN & CREATE

with Baby Lock



6. Resize the “MERRY” to fit into the top half of the Jumbo Hoop.
7. Duplicate the letters so that you have two (2) of the same “MERRY” artwork.
  - a. This will allow us to have artwork to put two different fills to create the layered look for the lettering.
8. With one set of “MERRY” letters selected, click the Fill icon on the Tool Pane.



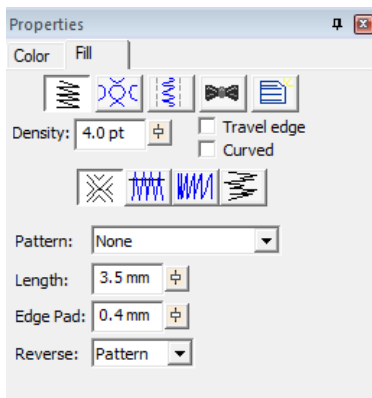
9. Once the letters have been filled, adjust the settings to your liking.
10. For this project the following fill properties were used.



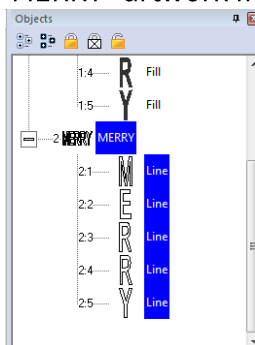


# LEARN & CREATE

with Baby Lock



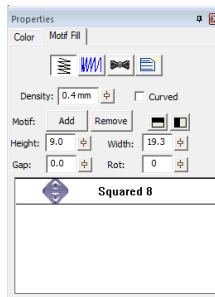
11. Select the second set of “MERRY” artwork from the Objects Pane



12. From the Tool Pane, Select the Motif Fill Icon.



13. This layer was stitched over the standard fill.
14. The following stitch properties were used for this design.



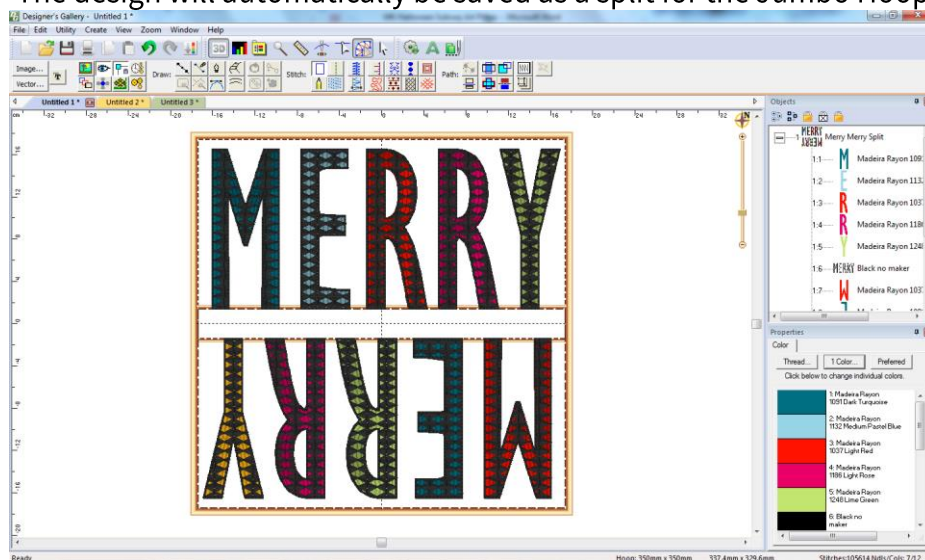


# LEARN & CREATE

with Baby Lock



15. While one motif stitch was selected, try using adding multiple motifs to create some unique open fills.
16. Select all the designs on the page and group them by going to the Edit Menu and selecting "Group"
17. While still selected, copy and paste the design
18. Rotate it 180 degrees and move to the bottom half of the Jumbo Hoop
19. Using the Objects Pane, select each letter to change the colors.
20. The Motif fill portion was all left as Black.
21. Save the design to a USB drive to bring to the machine.
22. The design will automatically be saved as a split for the Jumbo Hoop.



## Stitching out the Jumbo Embroidery Design:

1. Prepare fabric by cutting a 20 X 20 piece of fabric.
2. Hoop the fabric in the Jumbo hoop using tear away stabilizer and spray adhesive.
3. Change the Valiant or Enterprise frame holder to Frame holder B.
4. Attach the Jumbo hoop to the machine.
5. Select the design from the USB. It will be shown as a split design.
6. Select the first half of the design. Assign thread colors to the needle and stitch.





# LEARN & CREATE

with Baby Lock



7. **\*\*Note:** The Motif fills can create a lot of jump stitches. To avoid the trims, you can turn this feature off in the machine and manually trim the jumps.
8. When the first half of the design is stitched, follow the machine instructions to place positioning sticker and rotate the hoop.
9. Select the second half of the design, assign colors and continue to stitch out the design.
10. Once sewing is complete, remove from the frame. Gently tear away excess stabilizer.
11. Trim down the embroidery for the desired pillow size. In the pillow project, it was trimmed to 18"x18".
12. Cut a backing piece to the same size.
13. Stitch right sides together using a 1/4" seam allowance. Leave a 6-8" opening at the bottom.
14. Trim the corners and turn inside out. Press.
15. Insert a pillow form and hand sew the opening to complete the pillow.



**\*\*This project was created for the Multi-Needle Jumbo Hoop which allows for a 14" x 14" hoop. The letter heights were approximately 6" in height. This same look can be accomplished on most Baby Lock machines. It will require either resizing your overall design to fit your largest hoop size. You can also create individual letters and align them with multiple hoops to get a larger overall embroidery design. Don't be afraid to mark your fabrics and do some math to get this design laid out property.**





# LEARN & CREATE

with Baby Lock



The Creator program allows you to print a template. Set your printing preferences so you can print with crosshairs to assist with aligning your design.

