

Patriotic Lace Coasters



Who doesn't like to show a little patriotic pride? These free-standing lace coasters using Designer's Gallery will help celebrate the USA while you practice your lace embroidery skills! Madeira thread will make this project really pop!

Skill Level: Easy

Supplies:

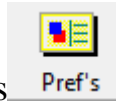
- Baby Lock® embroidery machine
- Dining in Lace Interactive Embroidery from Designer's Gallery®
- Celtic Interactive Embroidery from Designer's Gallery
- Thumb drive or the USB cable (comes with the machine)
- Baby Lock® Dissolve-Away Mesh stabilizer
- Madeira embroidery thread

Instructions

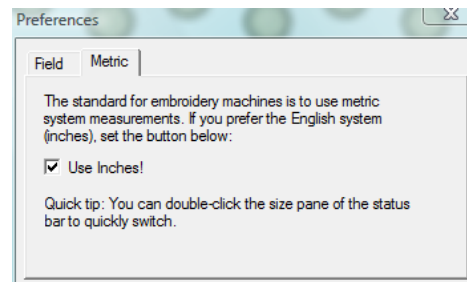
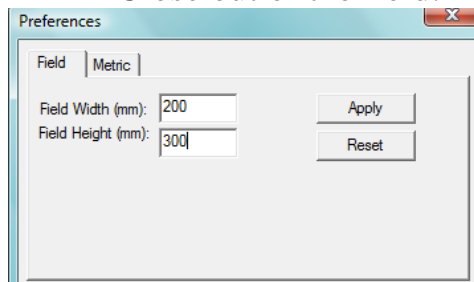
At the Computer:



1. Open the program by clicking on the Interactive icon on the desktop.
2. On the left side of the screen next to the workspace, the individual programs are listed. To select the program, left click on Dining in Lace. If you have installed all of the Interactive programs, Dining in Lace will be the fourth one listed.
3. To set the parameters on the workspace:

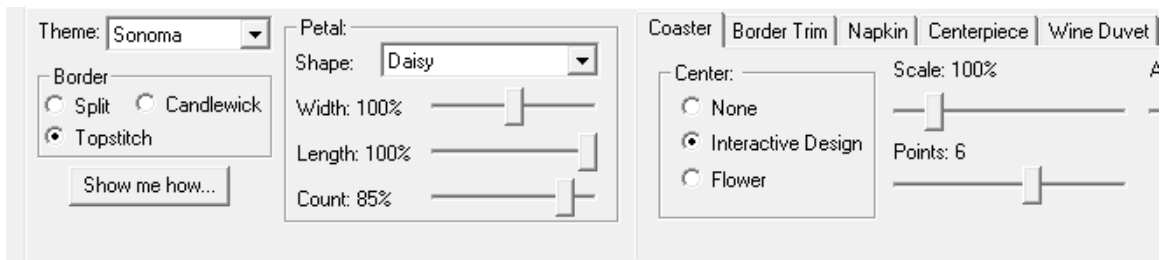


- Click on Preferences on the top toolbar.
- Type 200mm in the Width and 300mm in the Height fields. If you are using a machine with a smaller hoop use the largest hoop that your machine uses. You will then need to use several hoops to finish the coasters.
- Click on the Metric tab and place a checkmark next to the Use Inches field.
- Click on Apply.
- Close out of the field.



Border Design:

1. Click on the Coaster tab under the Project or Design Window below the workspace.
2. Under the Theme field, select Sonoma from the dropdown.
3. Select Topstitch category under Border.
4. Select Daisy under Petal Shape.
5. Next to Center, select Interactive Design.
6. Rely on the default settings for the remaining fields. (*Use the following illustration for those settings.*)



7. To add the lettering to the center of the coaster, click on the Interactive

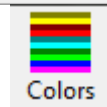
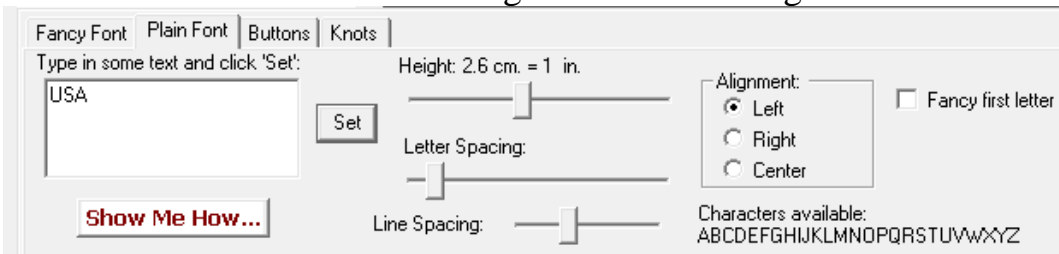


icon **Interacti...** on the top toolbar. On the side bar select Celtic.

8. On the Interactive side, click on the Plain Font tab.

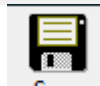
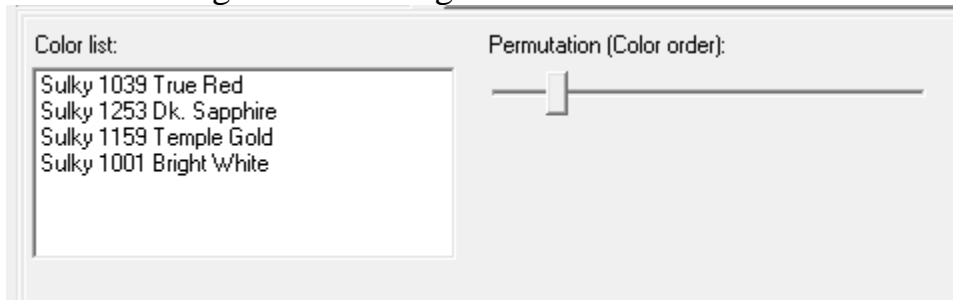
9. Using all caps, type in “USA”

10. Click on Set and use the following illustration settings:



11. To change the colors on the coaster, click on the **Colors** icon on the top toolbar.

12. Move the Permutation scroll bar to recolor the design as desired. The center lettering will not change color.



13. Click on **Save** found on the top toolbar. Name your file “Coaster” and select your USB drive or other location using the Save in drop down menu. Select the format from the list by clicking the down arrow on the Save as Type box and clicking the desired format. Click Save. If your machine requires media other than a USB drive, follow the manufacturer’s instructions to transfer the designs to that media.

At the Embroidery Machine:

1. Hoop the Baby Lock Dissolve-Away Mesh stabilizer.
2. Retrieve the coaster design.
3. Merge in the coaster design and add three more of the same design to the workspace. Allow extra space between each so that they do not touch.
4. Embroider the designs using red, white and blue Madeira threads. In the sample, the lettering was embroidered in blue.

Finishing the Coasters:

1. Cut away the stabilizer around the designs.
2. Using warm water, gently rinse away the stabilizer.
3. Place the coasters on a flat surface to dry.

