

Dreaming of a White Christmas



Customize your holiday embroidery with the colors that match the rest of your décor with this gorgeous wall hanging. Although we chose blue and white for a winter look, the Color Visualizer on the Baby Lock Destiny II allows you to see your embroidery designs in a variety of colors so you can see before you start embroidering. Just be sure to choose the right Madeira threads to match!

Skill Level: Intermediate

Created by: Diane Kron, Software and Embroidery Project Manager

Supplies:

Baby Lock Destiny Sewing and Embroidery Machine
 5 built-in Christmas designs
 1½ yard white tone on tone cotton fabric for center and back
 1 yard light blue cotton fabric for sashing
 Madeira and embroidery thread
 Baby Lock Tear-Away Stabilizer
 Batting
 Temporary Spray Adhesive
 Basic sewing supplies

Instructions:

Baby Lock Project: Dreaming of a White Christmas

Embroidery

1. With the embroidery machine on, retrieve design #013 from the Celebrate category. Set the design.



2. Under Edit, click on the rotate tool and rotate the design 90° to the right. This will rotate the design so that the snowflake portion of the design is on the top (as shown in the following illustration). This design will be stitched in the center on the white fabric.



3. Hoop the stabilizer along with a white piece of fabric cut to 24" x 24" centered in the 240mm x 360mm hoop.
4. Embroider this design using white and light blue Madeira thread.
5. Click on the Home icon to clear the screen and get back to the opening screen. (Refer to the illustration above with the red arrow.)
6. Select the Celebrate Category and retrieve design #016 and click on Set.
 - Click on Edit.



- Select the Color icon .

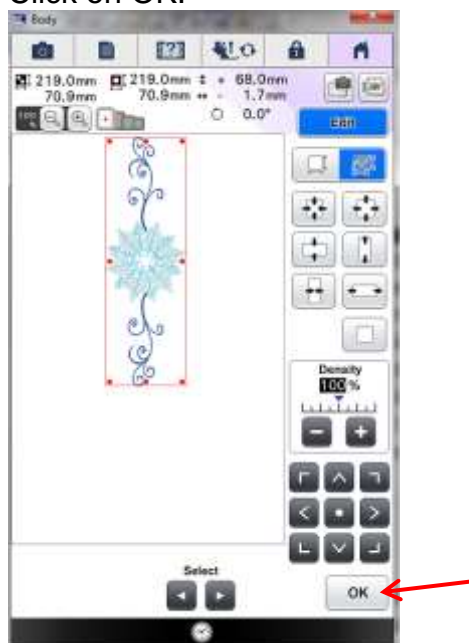


- Click on the Color Visualizer icon .
- Set the Number of Colors to 2.
- Select the Soft category. The list of color options will populate the field. If you do not find a color choice, click on the Refresh button to add to the choices. You can choose from 10 different pages of color options.

7. Click on the option to apply the color change to the ornament (as shown in illustration below) and Set.



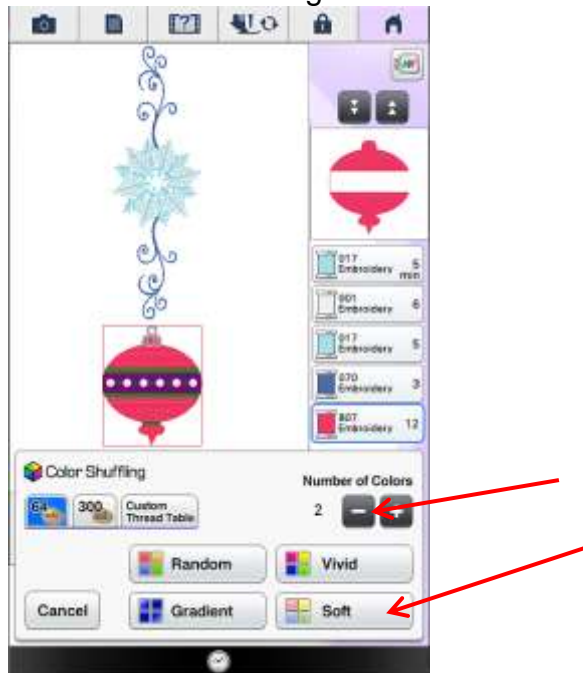
8. Hoop the stabilizer and embroider this design below the center design so that it fits between the scrolls. Use the same Madeira threads that were used in the first design.
9. Click on the Home icon to clear the screen and to get back to the opening screen. (Refer to the illustration above with the red arrow.)
10. Click on Embroidery and under the Celebrate category, retrieve design #011 and set. Follow the next set of steps to resize and to merge another design on the same workspace (while referring to the following illustration below):
- Click on Edit.
 - Click on Size.
 - Click on the resize while maintaining density icon in blue and follow the prompts.
 - Click on the icon with the arrows pointing inward to resize the design smaller. The design should be approximately 218mm in height.
 - Move the design to the top of the screen by touching the screen and sliding your finger upward.
 - Click on OK.



- To add another design, click on the Add button.
- From the Celebrate category select design #016.
- Set the design.
- Move the design below the snowflake design (*as shown in the following illustration*).



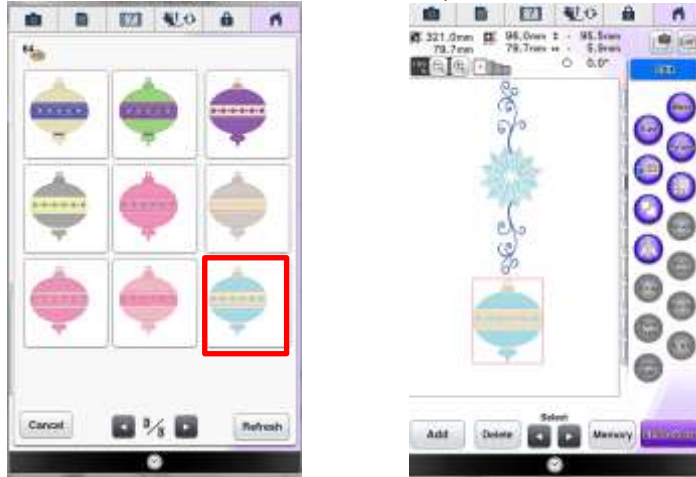
11. Follow the next set of steps to change the color in the ornament so that it matches the snowflake design:



- Click on Edit.
- Select the Color icon .
- Click on the Color Visualizer icon .
- Set the Number of Colors to 2.
- Select the Soft category. The list of color options will populate the field. If you do not find a color choice, click on the Refresh button to

add to the choices. You can choose from 10 different pages of color options.

- Click on the option to make the change to the ornament (as shown in the second illustration below).



12. Hoop the stabilizer and spray with the temporary spray adhesive. Mark the placement for this design on the white embroidered center section. The top of the design should be level with the already embroidered center design and approximately 1" away from the embroidered edge.
13. Embroider this design using the same thread colors that were used in the center design. Repeat for the opposite side.

Assembly:

1. Trim the embroidered section to measure 18" x 20".
2. Cut four 4½" wide strips across the width of the fabric for the sashing.
3. Piece a strip to the each side of the quilt. Trim to square up the edges. Press the seam outward.
4. Sew a strip to the top and bottom of the quit top. Square up the edges and press the seam outward toward the sashing.
5. Sandwich the batting between the top and the backing.
6. Quilt the section together using a meandering stipple stitch.
7. Bind the quilt by following the directions from the following link.
<http://totallystitchin.net/articles/bias-binding-how-to>

For other exciting projects like this one, visit our website at www.babylock.com

