



Upcycled and Serged Peplum Blue Jean Jacket and Lettuce Leaf Scarf



Looking to add a little flirty style to a jean jacket? Add peplum! With simple serging techniques, you can take your favorite denim topper from basic to beautiful. And you'll even have enough fabric to make a scarf to match! Tie it to a purse or wear it around your head or neck, and everyone will ask where you found such a cool piece!

Skill Level: Intermediate

Created by: Diane Kron

Supplies:

Baby Lock® Acclaim Serger
Baby Lock sewing machine
1 gently used jean jacket
2 Yards fabric for jacket peplum

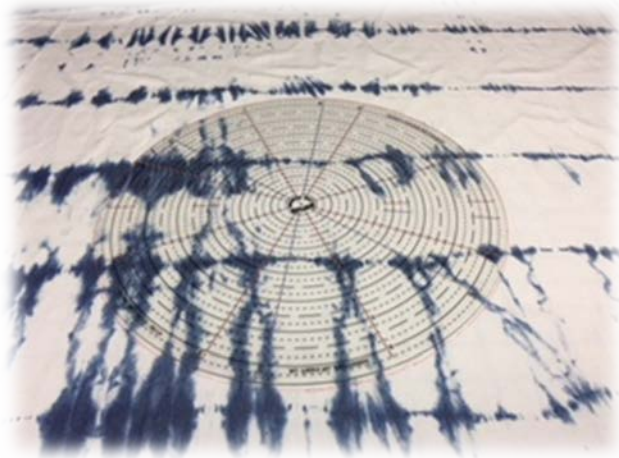
1 ½ Yard of royal blue netting fabric for peplum and scarf
Madeira® serging thread (White and Blue)
Frixion marking pens
The Sewing Revolution circular ruler (ruler is 13" across)
Large eyed needle
Basic sewing and serging supplies

Jacket Instructions:

It all started with a simple jean jacket as shown below.

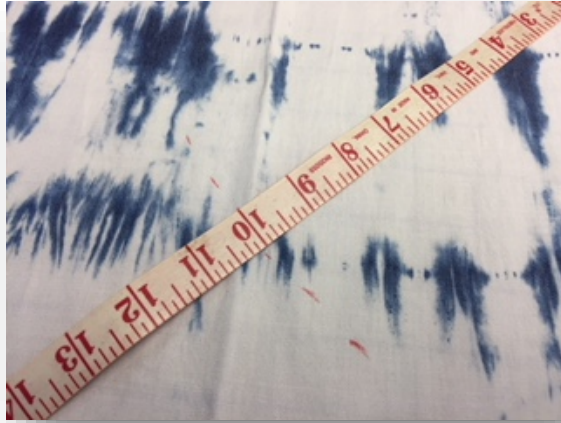


- 1) Follow the next set of cutting directions to cut the fabric for the trim on the bottom edge of the jacket.
 - a) Open the fabric out and lay the fabric on a flat surface.
 - b) Place the circular ruler on the fabric as shown below.

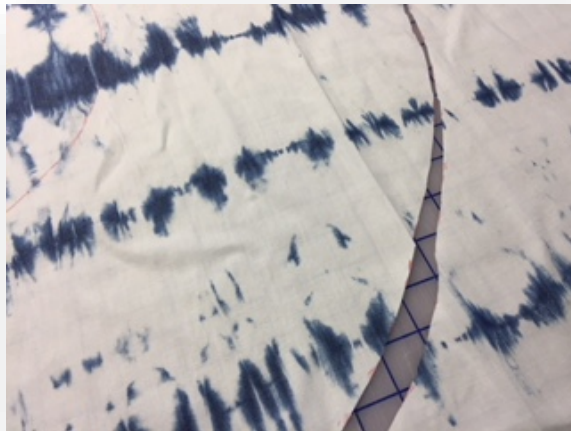


- c) Drawn a line around the ruler with the Frixion pen.

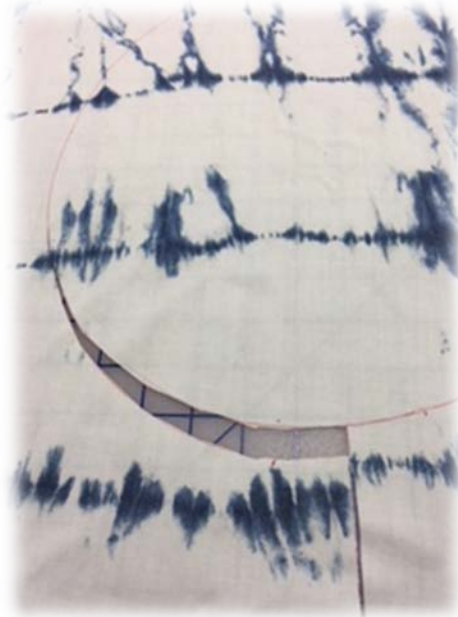
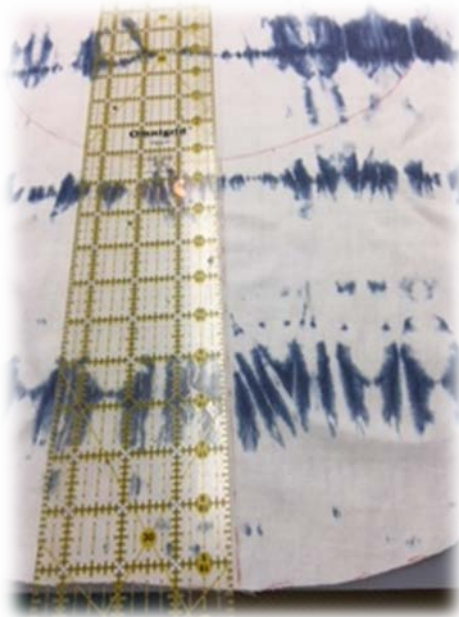
- d) Measure outward 10" from the outer edge of the circular ruler and place a mark. Repeat all the way around the edge of the circular ruler.



- e) Cut on the marked circular drawn



- f) Draw a straight line up from the outer edge of the section to the inside edge of the circle and cut along that line. Cut out the center circle as shown below. Save the center circle since it will be used for the sleeve embellishment. Set these sections aside for now.



- g) Using the same circular tool, place it over the blue net fabric that you have laid on a flat surface. Draw a line around the ruler. Measure outward 6" from the drawn line as in the directions above. Cut out the section as in the first fabric. Set it aside.
- 2) Set up the Acclaim serger for a 3-Thread Wave Stitch. Before you begin to serge, be sure to test serge on a scrap piece of the same fabric. Use two spools of white thread with one spool of a contrasting thread.
- 3) Individually, serge along the bottom edges on both of the cut fabric sections.
- 4) To join the two fabrics together along the top edge, set the serger up for a 4-Thread Overlock stitch. For this stitch, I used 4 serger cones of the same color. Follow the guide sheet for setting up the machine. Do a test sew to make sure that the stitches are perfect. Adjust the width and length as desired. In the sample, the width was set at 6.5 and the length at 2.5.
- 5) Place the 6" wide netting section on top of the 10" wide trim section with the top edges even. Place the two sections under the presser foot while keeping the top raw edges even with one another; allow a slight overhang on the knife area so that the serger trims off approximately $\frac{1}{2}$ " of the top edge of the sections. Go slow maintaining an accurate serging speed. When you finish serging the two sections together, continue on to chain off a tail that is 6" long.



- 6) Measure around the bottom edge of the jean jacket and jot down that measurement. Cut the serged piece 4" larger than that measurement. Using the 4-Thread Overlock Stitch, serge both of the edges to finish them off.
- 7) Pin the section to the bottom waist band on the jean jacket. **Note:** In the sample I did not trim off the bottom edge of the jacket. But if your jacket is longer you may need to cut off the bottom edge so that it ends at your waist.
- 8) Set up the sewing machine for straight stitch sewing. Use the same color of thread that was used in the serger.
- 9) Pin the serged section to the outside of the jacket at the waist line. Turn the front edges to the inside of the jacket and pin in place. Sew the section to the waist band so that the stitching is placed over the serged stitch line. Go slow since you will have added fabric to stitch through.



- 10) To create the trim on the sleeve, cut out another circular section from the section that was saved earlier. Cut out two more sections the same size from the blue netting fabric.
- 11) Cut away approximately 4" – 5" just above the opening on the opening on the end of the sleeve. This will vary based on the size of the jean jacket.



- 12) Measure the distance around the lower edge of the cut off section on the sleeve. Jot the number down.
- 13) As in Step 1 (f) above, cut out a center circle on the round circle creating a hole in the circle. (I know this will sound confusing but hang with me.) Cut a straight line to the circular cut out section on the circle. This will open the circle up. Cut out the center circle. Measure around the inside circle and jot down that measurement. The goal is to have the two measures the same. If the measurement on the sleeve is larger you will cut out a larger opening on the fabric. But, if it is smaller you will cut away less on the fabric. Allow at least 1" for the seam.

- 14) Repeat for the netting. But with the netting fabric, cut the section half as wide as the sleeves length. The netting section will set on top of the main section of the sleeve (*as shown in the above illustration*).
- 15) Set up the serger for a 3-Thread Wave Stitch.
- 16) Once you have the correct sleeve measurement, serge around the bottom edge on all sections of the sleeves.
- 17) Pin the netting and the bottom sections of the sleeves together along the top raw edges. Serge the side seam on the sleeve together with a ½" seam allowance.
- 18) Pin or clip the serged sleeve to the sleeve on the jean.
- 19) Serge the bottom section of the sleeve to the jean jacket. Be careful to remove the pins or clips before you serge.

Lettuce Leaf Scarf:



Skill Level: Easy

Size - 16" x 60"

- 1) From the remaining netting fabric, cut out a 16" x 60" wide section on the bias or as long as you can make it based on the remaining netting fabric. The fabric is cut on the bias to maximize the most stretch.
- 2) Set up the Acclaim serger for a 3-Thread Rolled Edge stitch. Thread the machine with three spools of white serger thread. Set the differential feed at 0.6. Do a test serge to get a hang for stretching the fabric as you serge and to test the stitch length and width. For a leafier effect, shorten the stitch length. To avoid the stitching from pulling away from the fabric, increase the width to a slightly larger number.

- 3) Serge along all of the edges on the netting fabric while gently stretching the fabric as you serge to create the lettuce leaf effect.

For other exciting projects like this one, visit Baby Lock at www.babylock.com.

©2018 Baby Lock USA. This project may be freely used by individuals for non-commercial purposes. Project instructions may not be sold or distributed without approval from Baby Lock. Baby Lock must be acknowledged as the source of the project instructions through copyright or online link