



LEARN & CREATE

with *Baby Lock*



Springtime Quilt



Use the Baby Lock Jazz sewing machine to create this springtime inspired quilt. It is made from two simple blocks; the Square-in-a-Square block and the Rail Fence block. Enjoy!

Skill Level: Beginner

Created by: Elizabeth Cecchetti

Supplies:

Baby Lock® Jazz sewing machine

3 yards of a bright floral print; blocks, borders, and binding

1 3/8 yards of white cotton; blocks

3 1/2 Yards of backing

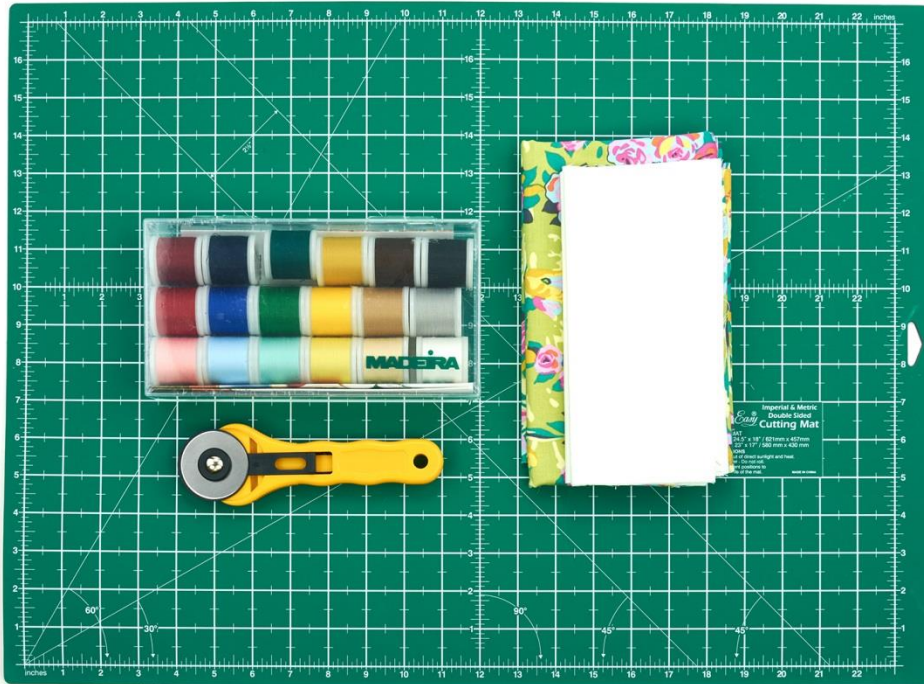
Quilt batting

Frixion marking pen

Rotary cutting system

Madeira® Cotona and Quilting thread

Basic sewing supplies



Instructions for Quilt:

Square-in-a-Square Block:

1. Cut the following:
 - 4 strips of the bright floral print; 6 1/2" x WOF (width of fabric), cut the strips into 25 squares, 6 1/2" x 6 1/2".
 - 9 strips of the white cotton; 3 1/2" x WOF, cut the strips into 100 squares, 3 1/2" x 3 1/2".
2. Using a Frixion pen, draw a diagonal line from corner-to-corner on the wrong side of each white 3 1/2" square.



3. Layer a 3 1/2" square, in two opposite corners of a 6 1/2" floral square, right-sides facing. The ends of the diagonal lines will touch the middle outside edges of the larger square. Stitch on both lines.
4. Trim away the extra fabric and press the seams toward the white section.



5. Layer two more white squares in the opposite open corners. The ends of the diagonal lines will touch the middle outside edge; slightly overlapping the seams of the first triangles. Stitch on each line.



6. Trim away the extra fabric from each corner and press.

7. Make 25 Square-in-a-Square blocks. Square-up the blocks to 6 ½" x 6 ½".

Rail Fence Blocks:

1. Cut the following:
 - 8 strips of bright floral print; 2 ½" x WOF
 - 4 strips of white cotton; 2 ½" x WOF
2. Create four strip sets. Stitch one floral strip to a white cotton strip, right sides facing; press the seam toward the floral print. Stitch the second floral strip to the other side of the white cotton strip; press the seam toward the floral print. The strip set should measure 6 ½" wide. Stitch a total of four strip sets.
3. Lay one strip set onto your cutting mat, cut the strip set into 6 ½" units. Cut a total of 24 Rail Fence blocks.
4. Now you are ready to layout the blocks into seven rows of seven blocks. Rows 1, 3, 5, and 7 begin and end with a Square-in-a-Square block; alternating with a Rail Fence block, with rails running vertical to the row. Rows 2, 4, and 6 begin and end with a Rail Fence block running horizontal to the row; alternating with the Square-in-a-Square block.
5. Stitch the blocks into rows; pressing the seams toward the Rail Fence blocks.
6. Stitch the rows together; press the seams.

Borders:

1. Cut the following sections for the borders:
 - 2 border strips; 6 ½" x 42 ½"
 - 3 border strips; 6 ½" x WOF, stitch strips together and cut into 2 border strips measuring 6 ½" x 54 ½".
2. Stitch the two short borders to opposite sides of the quilt top. Press the seams toward the borders.
3. Stitch the two longer borders to the two remaining sides of the quilt top. Press the seams toward the borders.

Quilting:

1. Layer the quilt top, batting, and backing together. Baste the layers together and quilt as desired.

Binding:

1. Cut several 2 ½" wide strips across the width of the red print fabric for the binding. Piece the sections together to form one long continuous strip.
2. Fold the wrong sides together along the long edge and press.
3. On one of the short ends, fold in at a 45° angle to form an angled edge and press.



4. Starting 6" from the top corner, place the pressed 45° angled end with the raw edge of the binding along the outer edge of the quilt, and pin in place.
5. Using a 1/4" seam allowance, start to sew 4" from the top edge of the binding, and continue down the first side of the quilt. Stop when you are 1/4" from the corner and backstitch. Cut the thread.
6. Remove the quilt from the machine. Fold the binding up and then down over the second side of the quilt so that the raw edges are even. This will create a 45° corner. Pin in place and sew the second side of the quilt. Stop 1/4" from the second corner; backstitch and cut the thread.
7. Follow the same binding steps to complete the binding on the remaining sides on the quilt. After turning the last corner, trim the end on the binding so that it overlaps past the starting point on the binding. Tuck the binding end inside the beginning point of the binding and sew in place.
8. Press the binding to the back of the quilt.
9. To finish your quilt, hand-sew the binding to the back of the quilt.

For other exciting projects like this one, visit our Web site at www.babylock.com

©2018 Baby Lock USA. This project may be freely used by individuals for non-commercial purposes. Project instructions may not be sold or distributed without approval from Baby Lock. Baby Lock must be acknowledged as the source of the project instructions through copyright or online link