



Getting to Know: **Amelia**

**A-LINE SERIES
Model BL100A**



FOR THE LOVE OF SEWING

www.babylock.com

Baby Lock Consumer Helpline: 800-313-4110



Amelia

A-LINE SERIES Model BL100A

If you're on the go as much as you sew, then Amelia is the perfect machine for you. At just 11.2 pounds, this lightweight sewing machine is easy to carry. Bring Amelia to classes, on road trips or to friends' houses.

No matter what you choose as your next adventure, Amelia can keep up with 99 built-in stitches, push-button features, a drop-in bobbin and plenty of accessories. She even comes with a convenient travel bag so she's always ready to go.

This guide will take you step-by-step through a simple project. As you complete the project, you'll become more familiar with your new machine. Refer to the instructions and reference guide (packaged with your machine) for additional guidance.

Like all machines in the Baby Lock A-Line Series, Amelia has the features and the durability to handle all of your projects. Be sure to ask your Baby Lock Retailer about Amelia's A-Line Series friends such as Diana, Jane, Rachel and Sofia! From classic, tailored looks to modern-day fashions, the machines in the A-Line Series will help you sew and serge with success—all with the quality you've come to expect from Baby Lock.



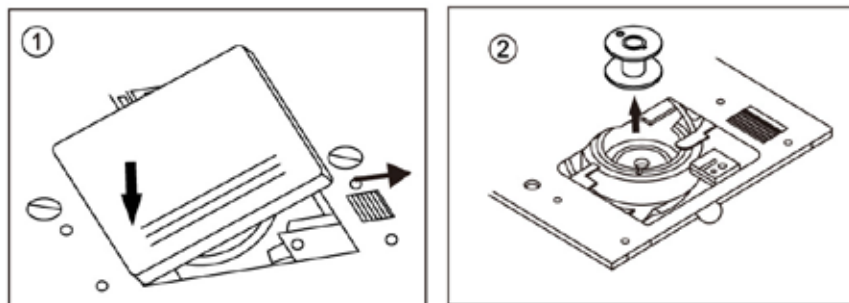
FOR THE LOVE OF SEWING



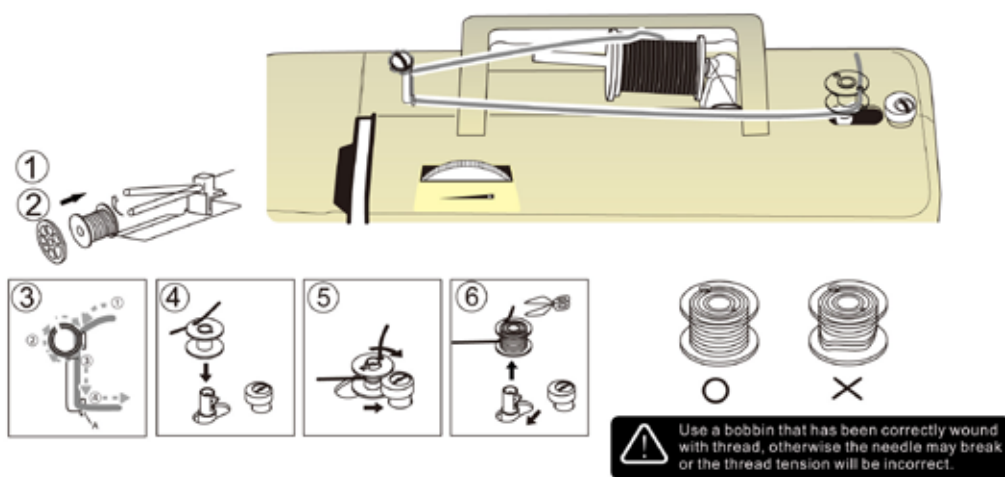
Winding the Bobbin

Removing the Bobbin

1. Remove the bobbin cover by sliding the bobbin cover latch to the right and push down the left lower corner of the bobbin cover at the same time.
2. Remove the bobbin from the machine.



Winding the Bobbin

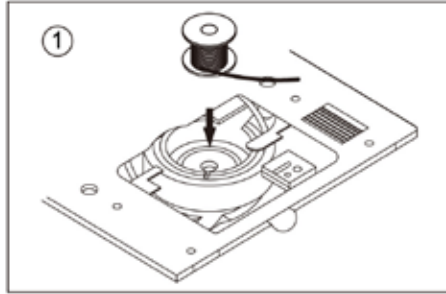


1. Slightly raise horizontal spool pin.
2. Slide a spool of thread onto the spool pin so the thread unwinds to the front from the top of the thread spool. Secure it with the spool cap that best fits the size of the spool being used to ensure smooth flow of thread.
3. Pass thread from spool around and under the upper thread guide as shown.
4. Pull end of thread through hole in bobbin as shown.
5. Make sure the bobbin winder shaft is in left position. Place bobbin onto shaft and rotate until it snaps into position with end of thread coming from top of bobbin.
6. Start machine to wind bobbin. Stop machine after several turns to trim the thread tail with scissors. Bobbin will cease turning when completely filled. Cut thread and push shaft to the left to remove bobbin.

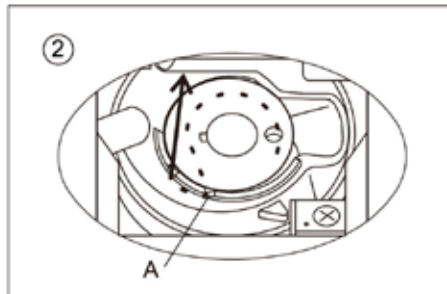


Inserting the Bobbin

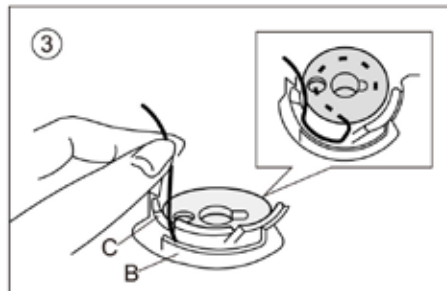
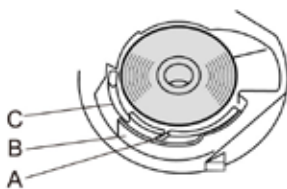
1. Place bobbin into bobbin case with the thread unwinding counterclockwise.



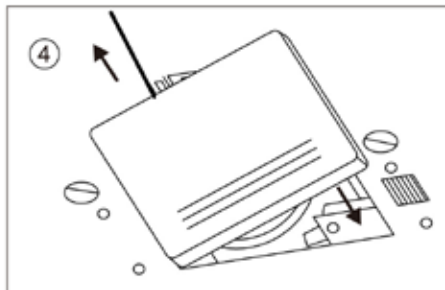
2. Draw thread into notch (A).



3. Pull thread toward the left and along the inside of spring (B) until it slips into notch (C) being sure that thread does not slip out of notch (A).



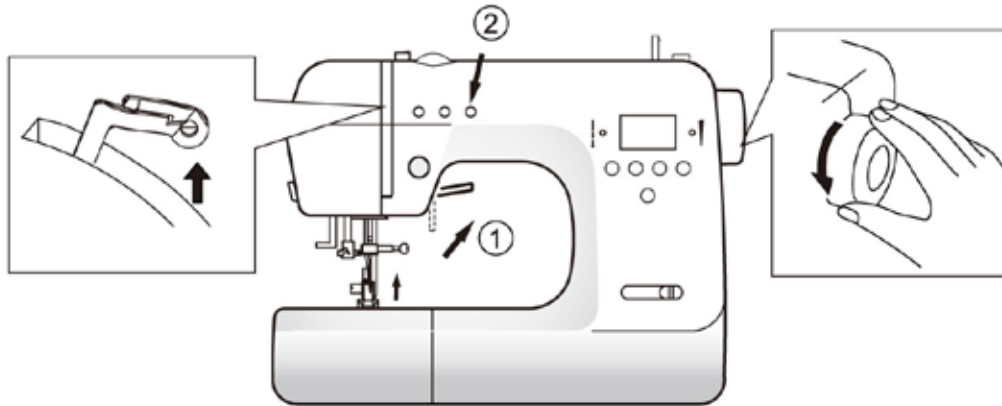
4. Pull thread out about 10 inches and replace the bobbin cover by inserting the left side and lowering the right side until it snaps into position.



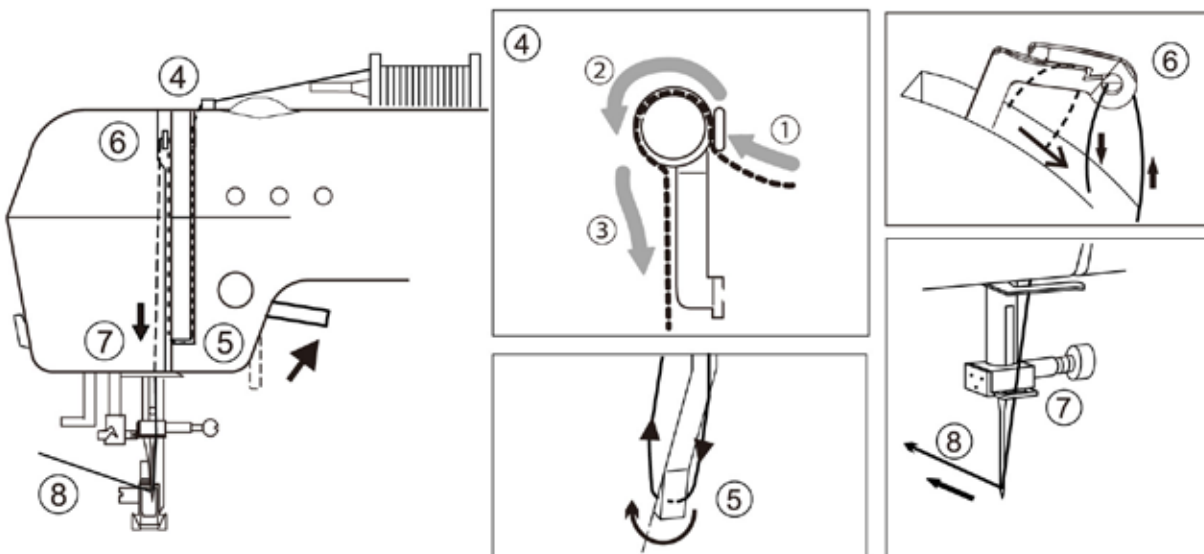


Threading the Machine

Threading the Upper Thread



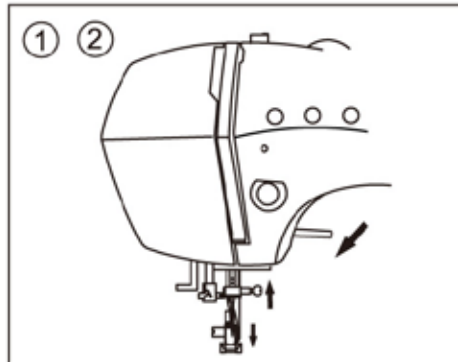
1. **Raise presser foot lever.**
2. **Press the needle up / down button or rotate the handwheel toward you to raise the needle in the up position.**
3. **Place a spool of thread onto the spool pin and secure with the proper size spool cap.**
(see Manual page 11)
4. **Pass the thread around upper thread guide for upper threading**
5. **Bring thread forward down the right channel, then to the left and up the left channel.**
6. **Pull the thread through and into the take-up lever from right to left.**
7. **Pass the thread down the left channel and into the lower thread guide.** Slide the thread from right to left into the thread guide on the needle clamp.
8. **Thread the needle from front to back or follow directions for needle threader on next page.**



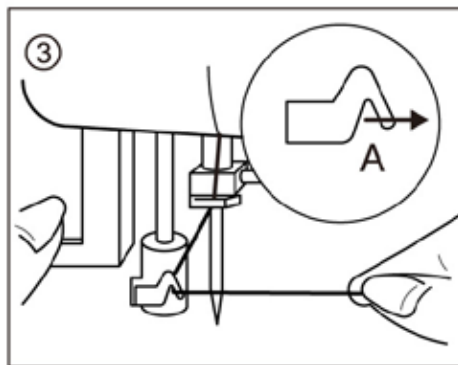


Using the Needle Threader

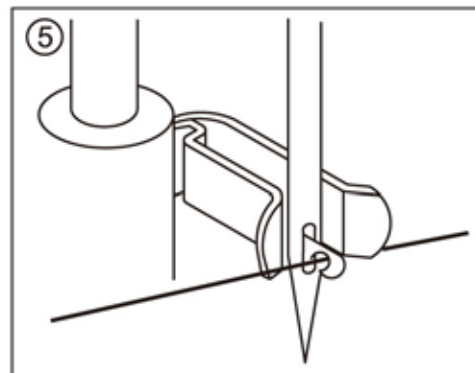
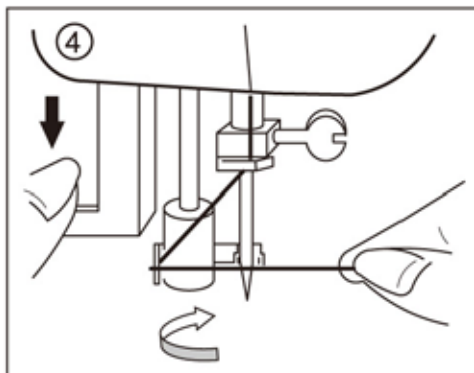
1. Lower the presser foot.
2. Set needle in up position.



3. Lower the threader slowly and draw thread through thread guide (A) and pull toward the right.



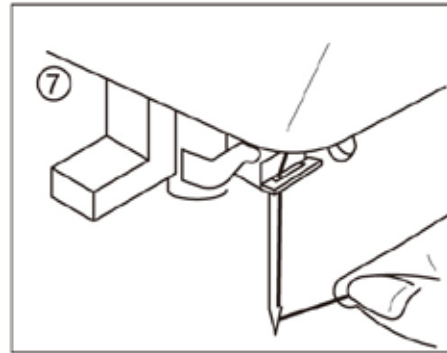
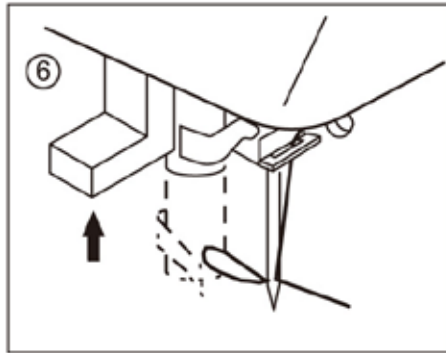
4. Lower the lever as far as it will go so the threader turns and the hook pin will go through the needle eye.
5. Position thread below the needle eye and under the hook pin.





Using the Needle Threader

6. **Hold thread loosely and release lever.** Hook will turn and pass thread through needle eye while making a loop.



7. **Raise presser foot and pull thread out about 10 inches from needle eye.**

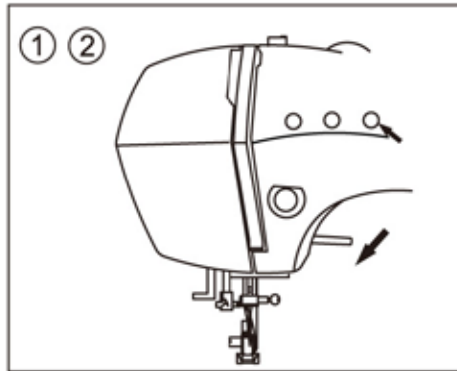
Note: The needle threader is used for needle sizes 11, 14, and 16.



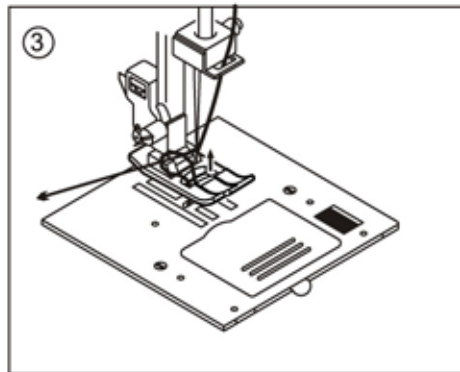
Raising the Lower Thread

Drawing Up the Bobbin Thread

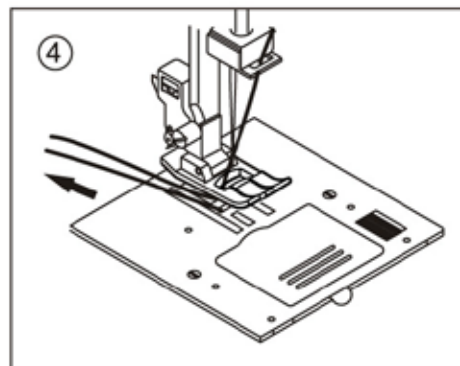
1. **Raise the presser foot.**
2. **Hold the upper thread loosely and press needle up/down button twice.** The handwheel will turn one complete turn.



3. **Pull upper thread lightly. Bobbin thread will come up in a loop.**

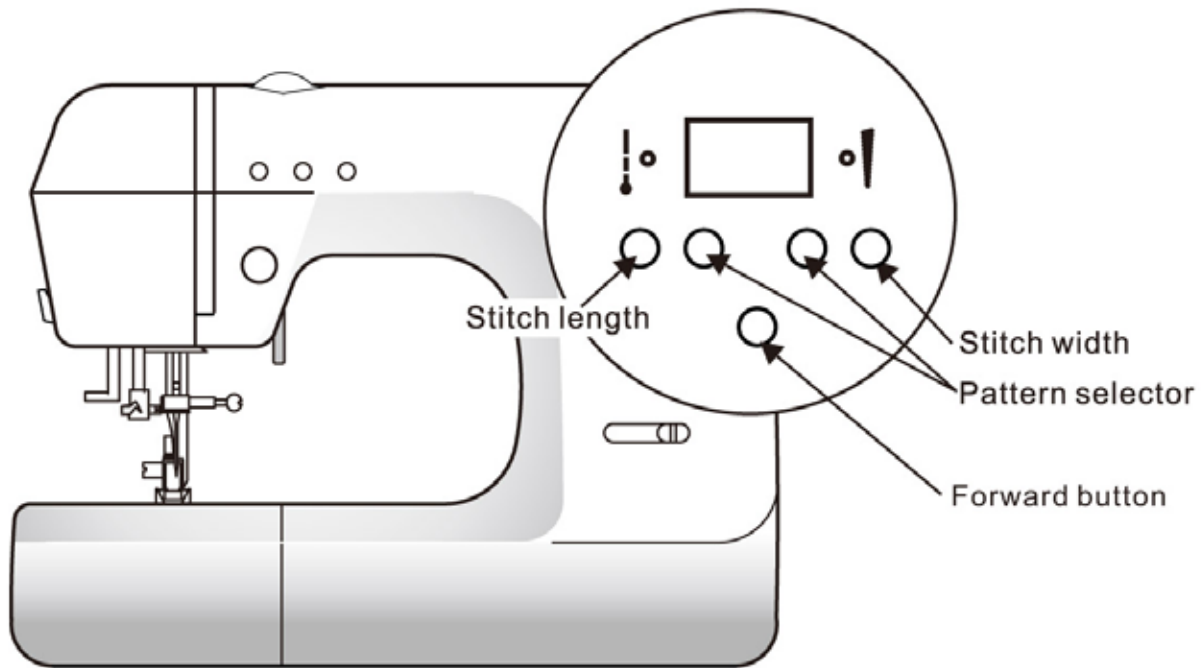


4. **Pull both upper and bobbin threads about 10 inches toward the back and under the presser foot.**





Operational Panel



- **Stitch length:**

Press stitch length button, indicator light turns on, and LED display automatically changes to show the size of stitch length.

- **Stitch width:**

Press stitch width button, indicator light turns on, and LED display automatically changes to show the size of stitch width.

- **Pattern selector:**

Press pattern selector button, LED displays the number of pattern. To choose the various pattern selections press the up or down pattern selector buttons.

- **Forward button:**

By pressing the forward button, the pattern will jump 10 patterns each time the button is pressed. This allows easy access for selection of pattern.



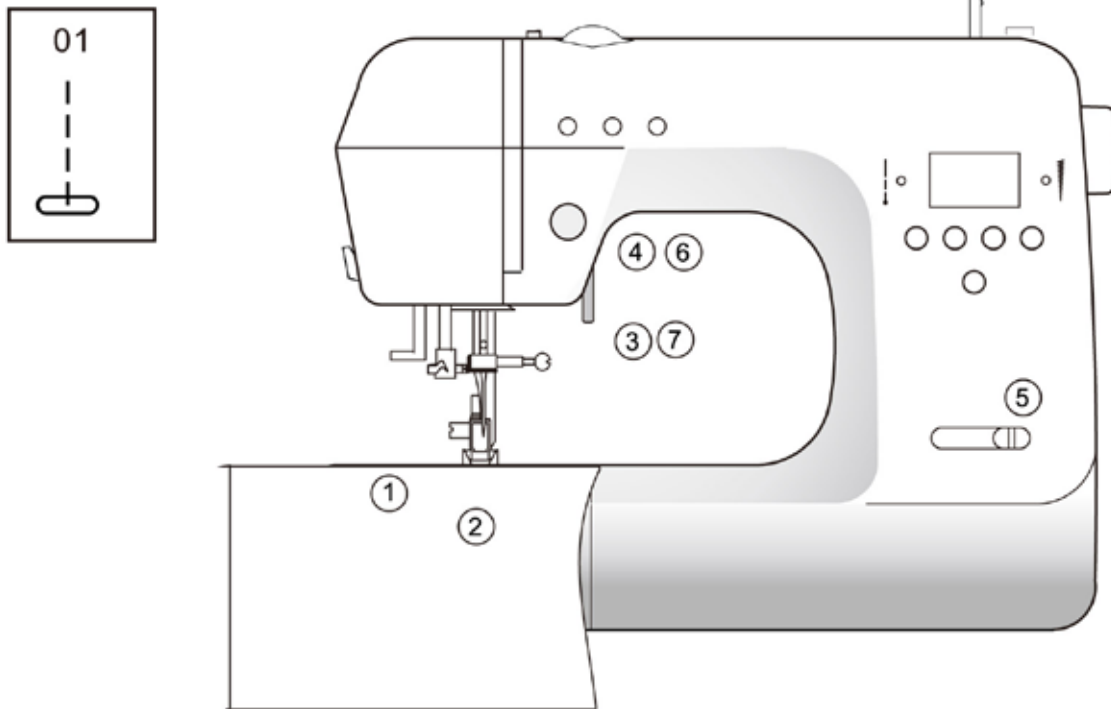
Selecting the Stitch

| | | | | | | | | | | | | | |
|----|----|----|----|----|----|----|----|----|----|----|----|----|----|
| 01 | 02 | 03 | 04 | 05 | 06 | 07 | 08 | 09 | 10 | 11 | 12 | 13 | 14 |
| 15 | 16 | 17 | 18 | 19 | 20 | 21 | 22 | 23 | 24 | 25 | 26 | 27 | 28 |
| 29 | 30 | 31 | 32 | 33 | 34 | 35 | 36 | 37 | 38 | 39 | 40 | 41 | 42 |
| 43 | 44 | 45 | 46 | 47 | 48 | 49 | 50 | 51 | 52 | 53 | 54 | 55 | 56 |
| 57 | 58 | 59 | 60 | 61 | 62 | 63 | 64 | 65 | 66 | 67 | 68 | 69 | 70 |
| 71 | 72 | 73 | 74 | 75 | 76 | 77 | 78 | 79 | 80 | 81 | 82 | 83 | 84 |
| 85 | 86 | 87 | 88 | 89 | 90 | 91 | 92 | 93 | 94 | 95 | 96 | 97 | 98 |
| 99 | | | | | | | | | | | | | |
| 9 | | | | | | | | | | | | | |

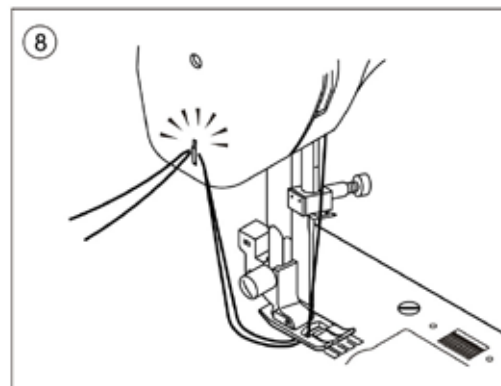


Starting to Sew

The machine will be set at 01 automatically to sew straight stitches when power switch is turned on.



1. Check the presser foot (All Purpose Presser Foot).
2. Place the fabric under the presser foot.
3. Lower the presser foot.
4. Hold both threads to the back when starting to sew. Let threads go after sewing a few stitches.
5. While sewing regulate the speed with slide speed control lever if using the START/STOP button or foot control when attached.
6. Stop machine when you reach end of seam.
7. Raise the presser foot lifter.
8. When you have reached the end of a seam, stop sewing and turn the handwheel toward you to bring the needle to highest position. Raise the presser foot and pull the fabric out from under the foot to the back of the machine. Cut the threads with the thread cutter on the left side of the machine.

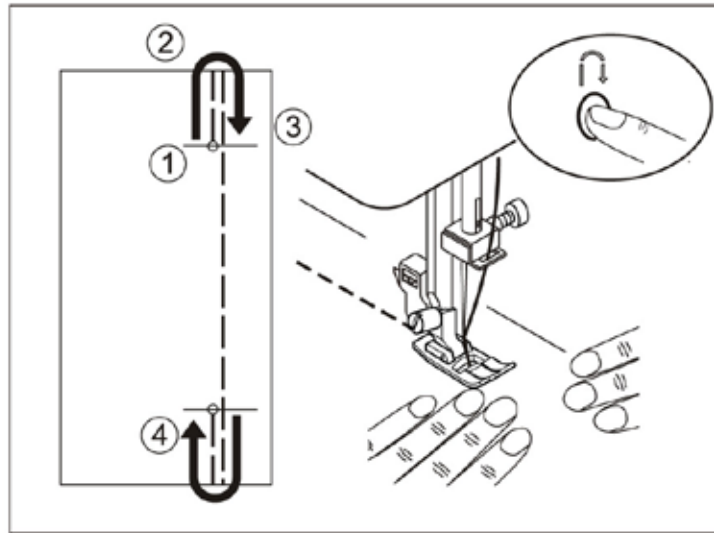




Starting to Sew

Reverse Stitching

Reverse stitching is used for reinforcing the ends of the seams.



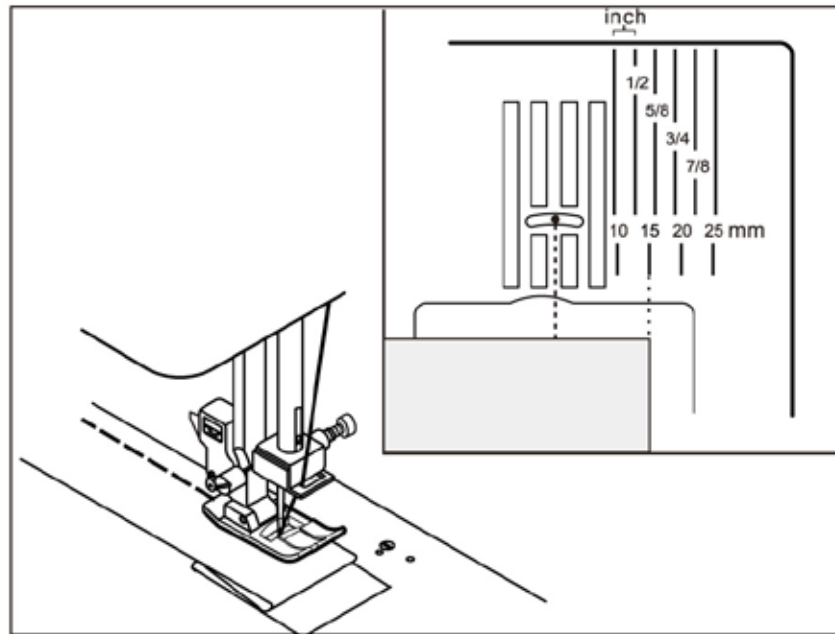
1. Place the fabric in position where back stitching is to be made and lower the presser foot.
2. Press reverse stitch button and sew 4-5 stitches. (If using foot control, press pedal while pressing reverse stitch button.)
3. Press start button and resume sewing. (If using foot control, release reverse stitch button and press foot control to sew forward.)
4. When you reach the end of seam, press reverse stitch button and sew 4-5 reverse stitches.



Starting to Sew

Seam Guide on the Stitch Plate

The figure on each guide line on the stitch plate indicates the distance between this guide line and the center needle position. Guide the fabric along the specific guide line in order to get the desired seam allowance between the stitching and the edge of the fabric.





Get familiar with your new machine while making this flattering skirt. By the end of the project, you'll feel comfortable with the basics as well as decorative techniques. You'll practice threading the machine, sewing with ribbon, adding elastic and more!

Amelia's Tiered Skirt

Instructions:

To create the pattern:

1. Fold the fabric crosswise, aligning the selvage edges.
2. Using the rotary cutter mat and ruler, cut the fabric into 6" x width of fabric strips.
3. You will need one to two strips for the top row. Measure your waist and add 10 inches to allow for gathers.
(For example: waist is 26" + 10" = 36")
4. From the 6" strips cut one to two piece(s) according to the length in Step 3.
5. Fold over 1 1/4" along one of the long edges and press.



**Fold over 1 1/4" along edge
for casing**

Skill Level: Beginner

Supplies:

- Baby Lock Amelia Sewing Machine
- 3-5 yards of 45" wide cotton print fabric
- All-purpose thread to match fabrics
- Rotary cutter, mat and ruler
- Hand sewing needle
- Bodkin or large safety pin
- Tape measure
- Scissors
- Spool of 3/8" wide ribbon (optional)
- All-purpose thread to match ribbon



(Instructions continued on next page)



Instructions (continued):

6. Using a straight stitch, sew the fold closed leaving the ends open to form the waistline casing. This will be the first row of your skirt.
7. For the second row, determine the length and number of strips needed by taking the measurement from Step 3 and multiplying it by $1 \frac{1}{2}$. This will be the length for your second row. Sew strips together to reach the desired length. Place the strips right sides together and use a straight stitch and $\frac{1}{4}$ " seam allowance.
8. For the third row in the skirt, take the measurement from the second row and multiply it by $1 \frac{1}{2}$. This will be the length for your third row. Sew strips together to reach the desired length.
9. For the fourth row in the skirt, take the measurement from the third row and multiply it by $1 \frac{1}{2}$. This will be the length for the fourth row. Sew strips together to reach the desired length.
10. For the fifth row in the skirt, use the same measurement from the previous row (fourth). This row is sewn to the previous row without gathers.

To assemble the skirt:

11. Thread the machine and set it for a straight stitch.
12. Stitch row five to the lower edge of row four using a $\frac{1}{4}$ " seam allowance.
13. Before adding the gathers make sure all ends are sewn together so each row forms a circle.
14. To gather rows two, three, and four, thread the machine and set it for a straight stitch with the longest stitch length to create a basting stitch.
15. Sew two rows of basting stitches along the top edge of each row.
16. Pull the bobbin threads to gather each row.
17. Adjust the gathers and pin the row to the lower (un-gathered) edge of the previous row.
18. Change the stitch length to 2.5 and sew to secure the seam.
19. Continue gathering, pinning and stitching until all rows are secure. Lightly press the skirt.
20. Thread the machine with thread to match the ribbon.
21. Select two rows to add ribbon accents. Start at a side or back seam and align the ribbon so it covers the previous seam. Straight stitch along one edge of the ribbon. When you reach the starting point, cut the ribbon and fold the end under. Stitch the other side of the ribbon to secure.
22. Once you have added the rows you will need to add the elastic to the casing. Cut one piece of elastic to fit your waist + 1".
23. Using a bodkin or a large safety pin, feed the elastic through the casing and secure it at both ends with a few stitches to keep the elastic from pulling out.
24. To finish the skirt, cut strips 2" wide x length of row five. Fold in half and press. Stitch the strip to the edge of the last row to finish the hem.



FOR THE LOVE OF SEWING

For other exciting projects like this one, visit our website at www.totallystitchin.net or www.babylock.com