

BABY LOCK SEWING ACCESSORIES

Esante Adapter for Low Shank Attachments

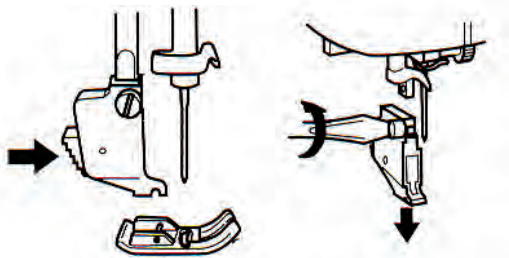
(ESE-A, ESE2-A)

Instructions

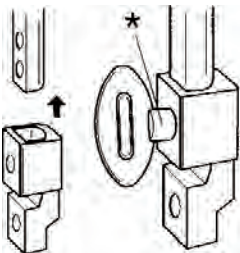
This adapter is used for adapting these machines' special mid-high shank so they can fit standard, low-shank presser feet purchased separately.

INSTRUCTIONS:

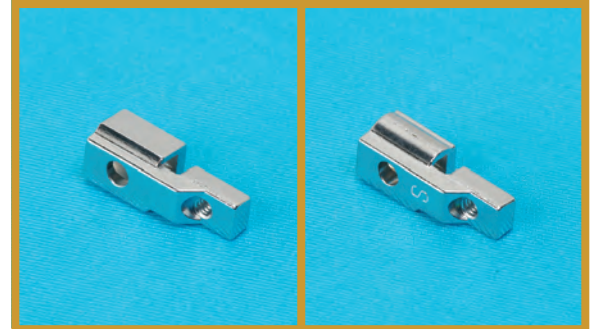
1. Remove the presser foot and the presser foot holder.



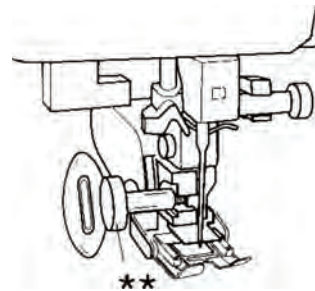
2. Attach the adapter for low shank attachments.
3. Push the adapter up onto the end of the presser bar as far as possible and tighten the screw.



4. **Note:** When attaching the adapter, be sure to use a screw driver to tighten the *small screw firmly.



5. Install the desired optional presser foot such as the walking foot (pictured) onto the presser bar. Lower the presser foot and tighten the presser foot holder screw (**large screw) securely.



Note: Before sewing, be sure to turn the handwheel toward you slowly to check that the foot is attached properly and the needle does not touch the presser foot.

Note: Between the Baby Lock machine models ESE and ESE2, there was a change to the presser bar and the size of the adapter. Check to make sure you have purchased the correct adapter for your machine model.

- Item ESE-A is a package containing the adapter and screw. This adapter can only be used on the Esante (ESE) machine.
- Item ESE2-A is smaller (has an "S" on the side of the adapter) and is to be used on models Esante (ESE2), Ellageo (ESG, ESG2, ESG3), and Ellure (ESL).



FOR THE LOVE OF SEWING

LNIS-ESE-A

Instruction sheet for items
ESE-A & ESE2-A

800-422-2952

www.babylock.com