

BABY LOCK

SEWING ACCESSORIES



Button Fitting Foot

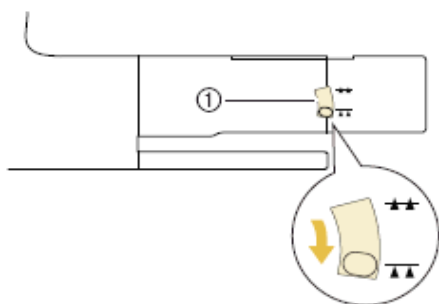
(BLG-BFF)

Instructions

Easily sew buttons onto fabrics of any thickness. This pronged foot can be adjusted to suspend buttons over the fabric to create a thread shank if needed – perfect for thick coats that need extra thread room with strong stitches.

INSTRUCTIONS:

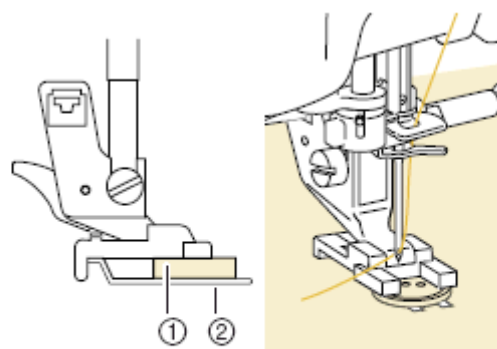
1. Select  .
2. Raise the presser foot and detach the flat bed table attachment.
3. Lower the feed dog position switch to  to lower the feed dogs.



① Feed dog position switch



4. Attach Button Fitting Foot “M”, slide the button along the metal plate and into the presser foot, and lower the presser foot.



- ① Button
- ② Metal plate

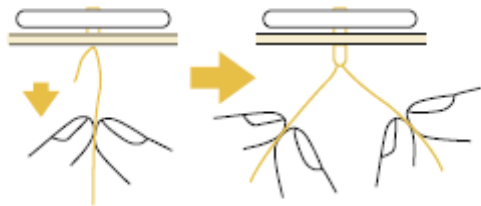
5. Turn the handwheel to check that the needle goes into each hole correctly.
6. If the needle does not reach the holes on the left side, adjust the stitch width.
7. To attach the button more securely, repeat the process.

Note: Do not use the automatic thread cutting function when sewing buttons. Otherwise, you will lose the thread ends.



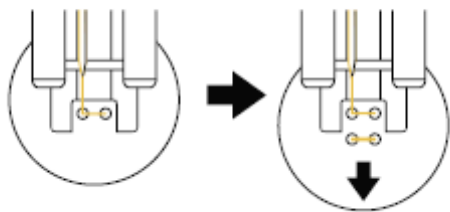
FOR THE LOVE OF SEWING

8. Gently hold the end of the upper thread and start sewing. The machine stops automatically when sewing is finished.
9. From the wrong side of the fabric, pull the end of the bobbin thread to pull the upper thread through to the wrong side of the fabric. Tie the two thread ends together and cut the threads.

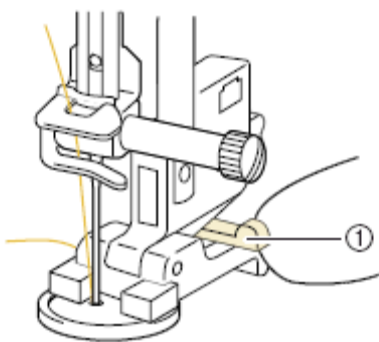


Attaching 4-Hole Buttons

1. Sew the two holes closest to you. Then raise the presser foot and move the fabric so that the needle goes into the next two



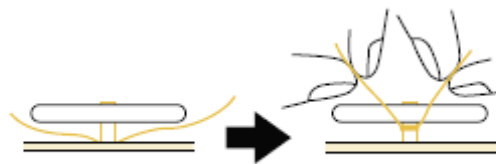
holes, and sew them in the same way.



① Shank lever

Attaching a Shank to the Button

1. Pull the shank lever toward you before sewing.



2. Pull the two ends of the upper thread between the button and the fabric, wind them around the shank, and then tie them firmly together.
3. Tie the ends of the bobbin thread from the beginning and end of sewing together on the wrong side of the fabric.

Note: When sewing is completed, be sure to return the feed dog position switch to its original position.

4. Cut off any excess thread.



FOR THE LOVE OF SEWING

800-422-2952

www.babylock.com