

PATCHWORK PILLOW

by Heather Valentine of The Sewing Loft

Fabric Requirements:

1 charm pack or assorted scraps

Notions:

18" square of quilt batting

Poly-Fil

Basic sewing supplies

Embroidery thread *optional

Embroidery hand needle *optional

Cutting Instructions:

16 charm squares, 5"

1 square, 18" x 18" batting

Pro Tip-

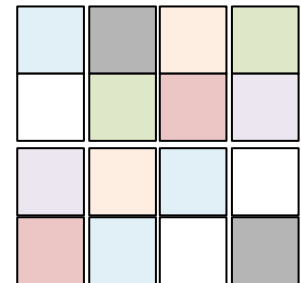
Skip the cutting table with pre-cut Charm Squares.



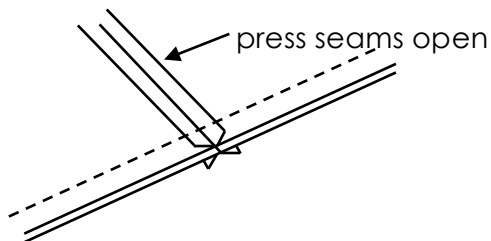
Seam allowance is 3/8" unless otherwise specified.

Assembly:

1- Arrange 16 5" blocks into a square that is 4 squares across by 4 squares high. This is the perfect time to allow your little one to play.

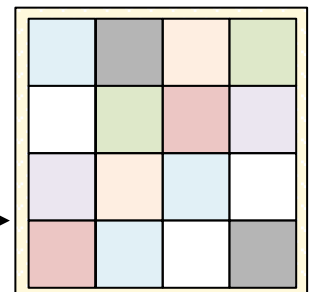


2- Using 3/8" seam allowance, join the squares **right sides together** to create one large square. Press seams open to allow for easy nesting and matching.



3- Layer large square **right side up** over batting; topstitch as desired.

quilt batting →

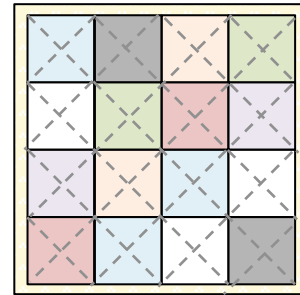
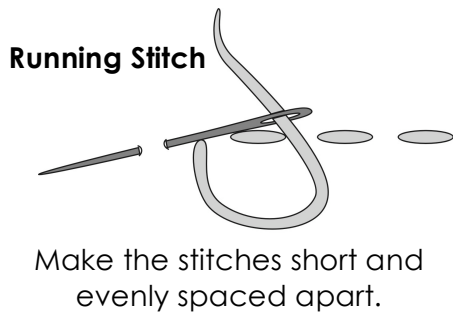


PATCHWORK PILLOW

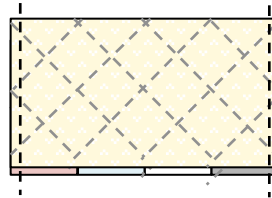
by Heather Valentine of The Sewing Loft

Assembly Continued:

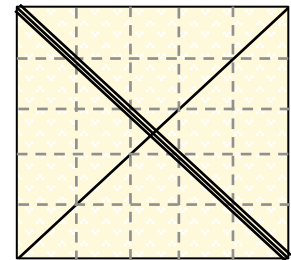
4- **Optional Step*** Using a heat erasing marking tool and quilting ruler, mark a diagonal line across each square. With a hand needle and embroidery thread, add a running stitch along each line.



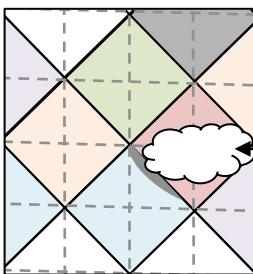
5- Trim quilt batting to size as needed. Fold square in half, **right sides together**, and stitch the short ends closed.



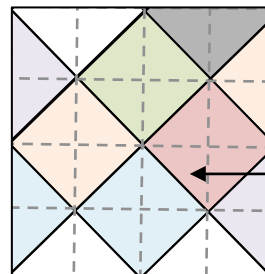
6- Spread the open edge and bring the two seams you just stitched towards the center. Stitch seams, **right sides together**, leaving a 4" opening for turning.



7- Turn pillow right side out, add stuffing and hand stitch seam closed.



fill with stuffing



hand stitch closed