

“Va Va Voom Peacock Plume Quilt”

By: Kelly Laws, Baby Lock Marketing Project Manager

Peacocks love to show off their feathers, and that's exactly what you'll want to do with this gorgeous batik quilt created with Designer's Gallery Interactive Embroidery.

Embroidery Products

Baby Lock Ellegante sewing and embroidery machine
Designer's Gallery Interactive Embroidery Decorative Quilting

Materials

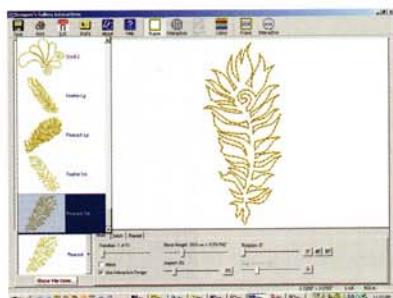
Sulky Blendables thread, #4016 Peacock Plume
All-purpose thread to match fabrics
1 7/8 yd. batik fabric for blocks, backing and binding
3/8 yd. gradient green fabric for blocks
1/2 yd. black cotton for border strips
1 yd. of batting
Water soluble stabilizer
Hot fix crystals in greens and blues
Professional Touch Hot Fix Applicator
Rotary cutter, mat and ruler
Quilt basting spray
Temporary spray adhesive

Step 1. At the Computer

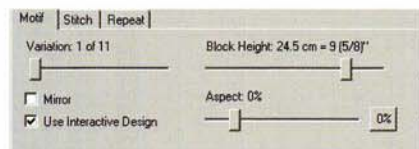
Open the Interactives program and scroll down to view the Interactive options, shown in alphabetical order. Select Decorative Quilting, as shown in the Red box below.



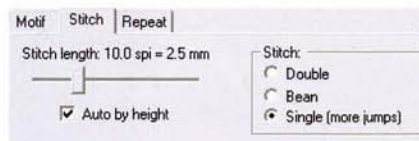
Open the outline options by clicking on the down arrow. Select the small peacock feather and it will appear on the workspace.



Under Motif, select variation 1 of 11. For Block Height, click and slide the scroll bar below to 9 5/8" to size the feather.



Select the stitch tab and set the stitch length to 2.5. Choose Single run.

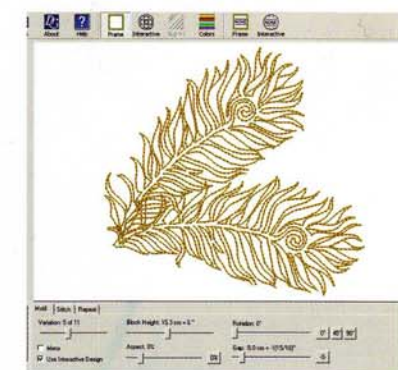


Click on the Repeat tab. Select 2 repeats, adjust the Gap for -1.2cm, Rotation 1 for 130°, Rotation 2 for 177° and Stagger to 13.3 cm. This is the small double feather design for quilting the pieced block area of the quilt. Save the design and print a template.



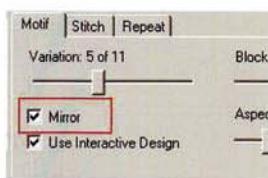
Design –Double Large Feather

Repeat the first steps from the previous feather directions, with the exception of selecting the Large Peacock feather design. Under Motif, select variation 5 of 11. For Block Height, click and slide the scroll bar next to 5 15/16" to size the feather. Change the Gap to -5.0 cm.



Select the stitch tab and set the stitch length to 2.5 and choose single run. This is the double feather design for the top right side quilting of the quilt. Save the design and print a template.

Place a check mark in the Mirror box and save it again. Print a template of the mirrored version of the design.



Design – Single Large Feather

Select the Large Peacock feather design.

Under motif select variation 1 of 11. For Block Height click and slide the scroll bar next to 5 15/16" to size the feather. Change the Aspect to 32% and then the Rotation to 37°.



Select the stitch tab and set the stitch length to 2.5 and choose single run. This is the single feather design for the top right side quilting of the quilt.

Save the design and print a template of the design.

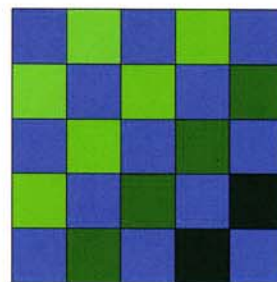
Step 2. Piecing the Quilt Top

Cut two 4 1/2" x width of fabric strips from the batik. Cut these strips into 4 1/2" blocks.

Cut two 4 1/2" x width of fabric strips from the gradient green. Cut these strips into 4 1/2" blocks.

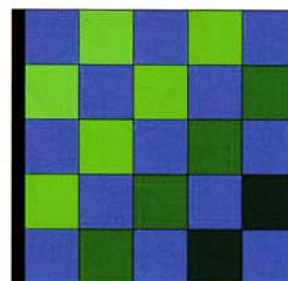
Lay the blocks out on a work surface five across and six down. Arrange the blocks until the blocks graduate from light to dark.

Note: There will be one extra block. Piece the blocks together to make the rows keeping your original order. Stitch the rows together to form the pieced top. Press. Square the pieced top if needed.

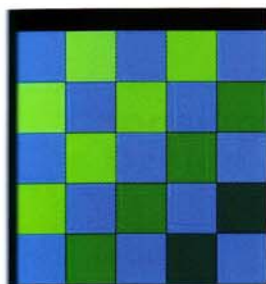


Cut four strips for the black border:

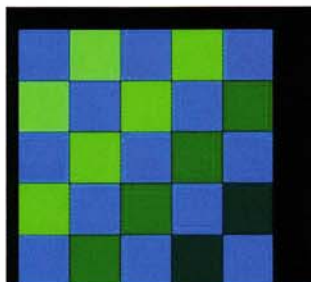
- 1 1/2" x fabric width
- 2 1/2" x fabric width
- 3 1/2" x fabric width
- 5 1/2" x fabric width



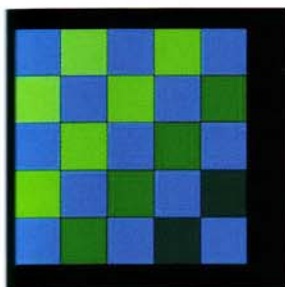
Sew the 1 1/2" left vertical border strip to the pieced block section. Square off the ends of the border strip.



Sew the 2 1/2" top horizontal border strip to the pieced block section. Square off the ends of the border strip.



Sew the 5 1/2" right vertical border strip to the pieced block section. Square off the ends of the border strip.



Sew the 3 1/2" bottom horizontal border strip to the pieced block section. Square off the ends of the border strip.

Place the batik right side down on the work surface. Spray with quilt basting spray and place the batting down. Spray again and finally, lay the pieced quilt top right side up.

Step 3. Embroidery

Thread the needle and bobbin with monofilament thread.

Hoop a piece of water-soluble stabilizer in the large hoop and lightly spray with temporary spray adhesive.

Finger press the quilt onto the sticky stabilizer centering the left two columns.

Embroider the double small feather quilting design through all layers. Reposition the quilt top (adding more stabilizer as necessary) and embroider three more repeats of the feather design across the quilt, evenly spaced.

Rethread the machine with Sulky Blendable thread and embroider the double large feather quilting design on the right column and border repeating as necessary. Once all the feathers are embroidered, add a scattering of hot fix crystals as desired.

Step 4. Finishing

Trim all excess stabilizer and mist the quilt to remove any remaining stabilizer showing on the back. Let dry. Press. Use the rotary cutter, mat and ruler to square off all four edges. Bind the quilt with 2 1/4" bias strips of batik. Add a pocket to the back of the quilt.

